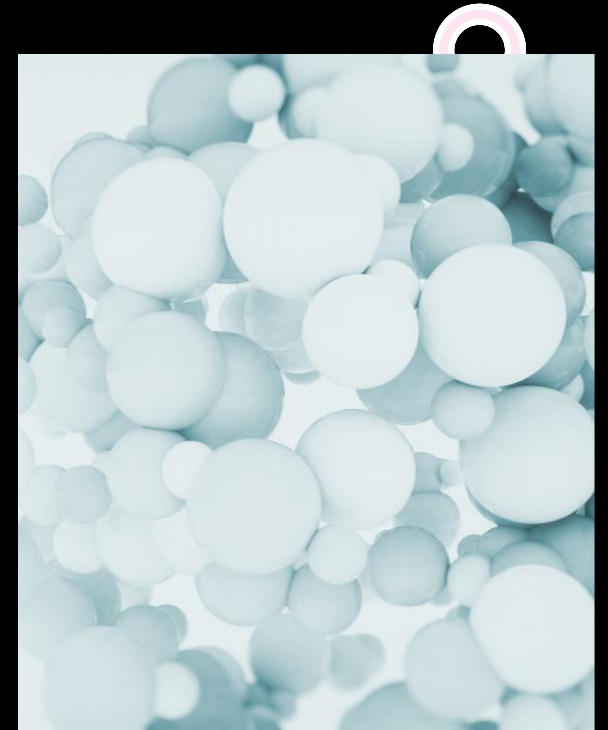


FARM LIKE IT'S 2024!

ADAPTIVE DEVICES AND
TECHNOLOGY FOR SAFETY
AND WELLBEING

Funded by USDA NIFA: 2022-41590-38128
an equal opportunity/ADA institution





Program Overview

- **Highlight cutting edge equipment and assistive technologies (AT) suited to improve production, increase income, while putting fewer physical demands on Client Farmers.**
- **Working with funding agencies to secure AT devices and equipment.**



- **Disclaimer:**

Missouri AgrAbility cannot purchase equipment or provide AgrAbility clients with financial support. Missouri AgrAbility Staff may make referrals to governmental agencies or social service organizations, some of which may be able to purchase equipment or provide financial assistance directly to the AgrAbility Client.

Products mentioned in this PowerPoint are not endorsed, sponsored, or promoted by USDA-NIFA, University of Missouri System and collaborative partners.





EID Ear Tags



<https://www.cckoutfitters.com/collections/eid-ear-tags>





The Ghost Gate Opener



<https://ghostcontrols.com/products/tss1xp-kit>





Tertill Weed Eater



<https://tertill.com/products/tertill>





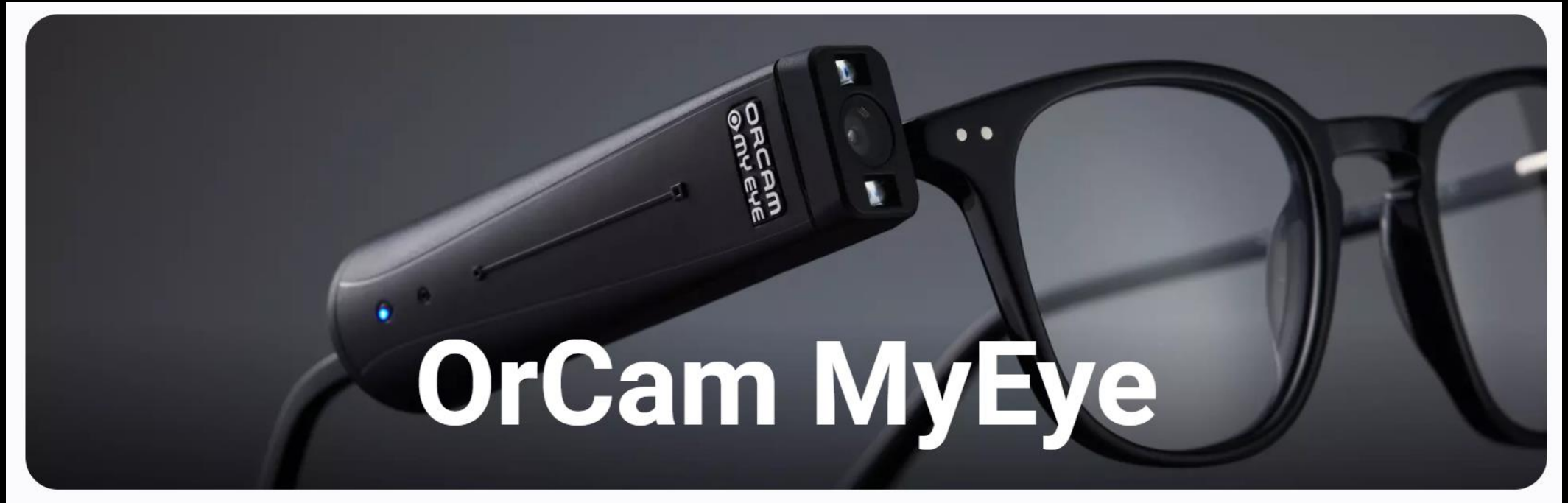
Acorn Chairlift



<https://acorn-stairlifts.com/stairlift/straight>



- **OrCam MyEye**



<https://www.orcam.com/en-us/orcam-myeye>





Drones



Poole Communications, Missouri





Internet of Things Or Apps



www.brsoftech.com





Data Driven Farms

FUTURE FARMS small and smart

SURVEY DRONES

Aerial drones survey the fields, mapping weeds, yield and soil variation. This enables precise application of inputs, mapping spread of pernicious weed blackgrass could increase wheat yields by 2-5%.

FLEET OF AGRIBOTS

A herd of specialised agribots tend to crops, weeding, fertilising and harvesting. Robots capable of microdot application of fertiliser reduce fertiliser cost by 99.9%.



FARMING DATA

The farm generates vast quantities of rich and varied data. This is stored in the cloud. Data can be used as digital evidence reducing time spent completing grant applications or carrying out farm inspections saving on average £5,500 per farm per year.

TEXTING COWS

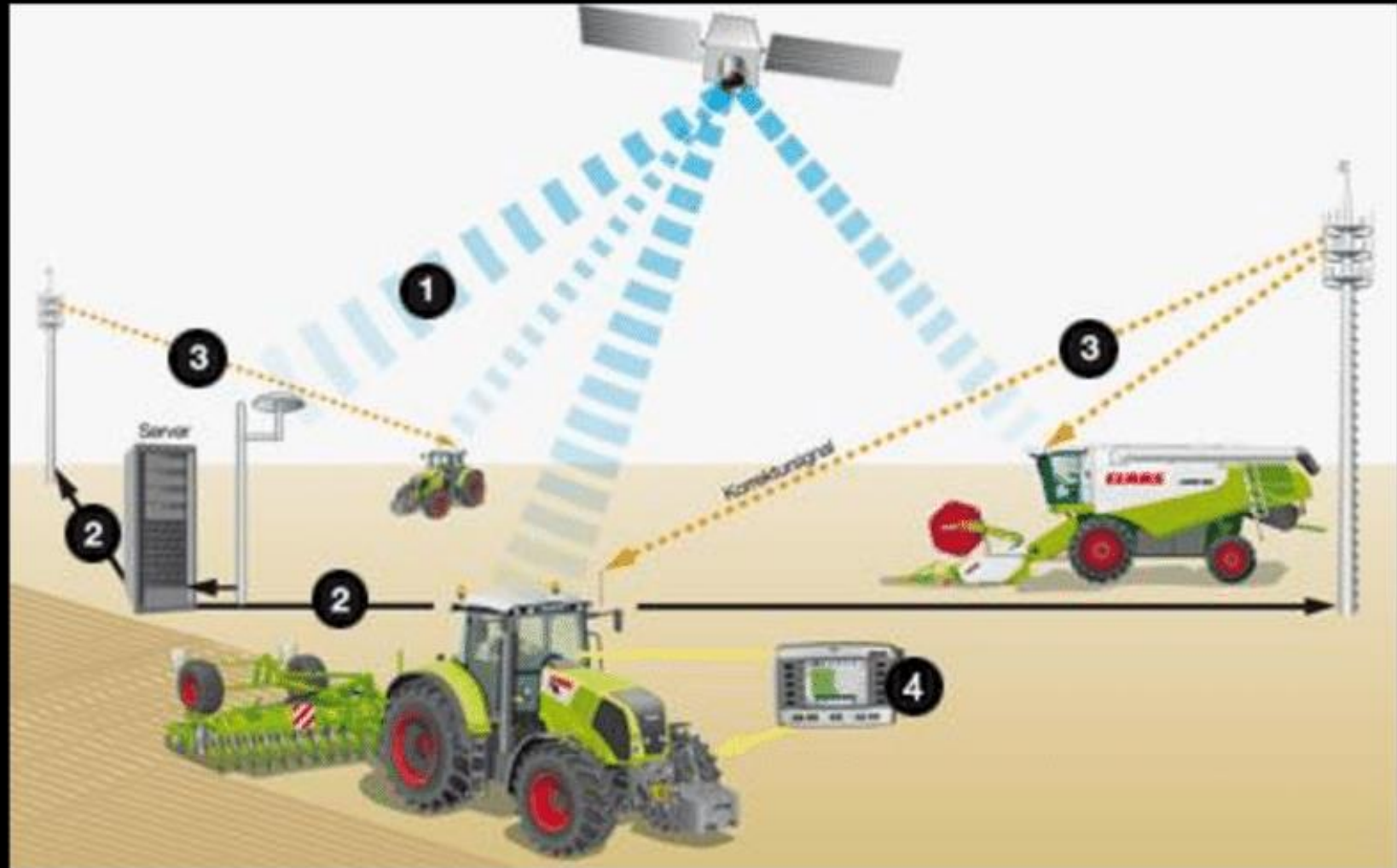
Sensors attached to livestock allowing monitoring of animal health and wellbeing. They can send texts to alert farmers when a cow goes into labour or develops infection increasing herd survival and increasing milk yields by 10%.

SMART TRACTORS

GPS controlled steering and optimised route planning reduces soil erosion, saving fuel costs by 10%.

<https://twitter.com/plasmacomp/status/813328909076828162>

●
**GPS:
Global
Positing
System**



<https://www.linkedin.com/pulse/gps-agriculture-thiviesh-k/>





REWALK



https://www.robotics247.com/article/rewalk_robotics_takes_steps_towards_next_generation_exoskeleton





Te Pari Racewell Sheep Handler System



<https://www.tepari.com/us/learning-center/experience-te-pari/product-videos/>





Lely Robotic Milking System



<https://www.lely.com/us/about-lely/>





Monarch Tractor



<https://www.monarchtractor.com/>





JCB Skid Steer- Sidedoor Entry



<https://www.jcb.com/en-us/products/compact-track-loaders>



Tow-a-Lift by Equipter



<https://www.equipter.com/products/tow-a-lift>





ANY
QUESTIONS?

Funded by USDA NIFA: 2022-41590-38128
an equal opportunity/ADA institution



Karen Funkenbusch

Missouri AgrAbility Project Director

Extension Instructor & State Health & Safety Specialist

NE MO Farmer, funkenbuschk@health.missouri.edu

Susan Jaster

MO AgrAbility Onsite Assessor

LUCE ISFOP

WC MO Rancher, jasters@lincolnu.edu

David Middleton

MO AgrAbility Onsite Assessor

SW MO Farmer, middletonfarm@gmail.com





Contact us at:

1-800-995-8503
AgrAbility.Missouri.edu
AgrAbility@Missouri.edu

Find us online!

Facebook.com/MOAgriAbility
Twitter.com/MOAgriAbility
Instagram @MOAgriAbility



Funded by USDA NIFA: 2022-41590-38128

Funded by USDA NIFA: 2018-41590-22323
an equal opportunity/ADA institution

Disclaimer: Missouri AgrAbility cannot purchase equipment or provide AgrAbility clients with financial support. Missouri AgrAbility Staff may make referrals to governmental agencies or social service organizations, some of which may be able to purchase equipment or provide financial assistance directly to the AgrAbility Client.

Products mentioned in PowerPoint are not endorsed, sponsored, or promoted by USDA-NIFA, University of Missouri System and collaborative partners.

