



Utility Vehicle Selection and Safety

Linda Fetzer

Abbie Spackman

Emily Jacobson



AgrAbility for Pennsylvanians Project is supported under USDA/NIFA Special Projects 2017-41590-27105 in collaboration with Penn State Extension. Penn State College of Agricultural Sciences research and extension programs are funded in part by Pennsylvania counties, the Commonwealth of Pennsylvania, and USDA.

Nebraska



AgrAbility
Cultivating Accessible Agriculture

Nebraska AgrAbility Project is supported under USDA/NIFA Special Projects 2002-41590-01354 in collaboration with Nebraska Extension & Easterseals Nebraska. Nebraska AgrAbility serves Nebraska farmers and ranchers experiencing an illness or injury that limits their ability to perform routine tasks. We recommend creative solutions to continue working safely. This service provides hope by preserving an agricultural way of life.

Learning Objectives

- Understand the differences between UTV makes and models and how those differences can help determine the appropriate UTV for an AgrAbility client.
- Understand the safety features of UTVs and how they impact AgrAbility clients.
- Understand language and key points to use with a funding agency when recommending a UTV for an AgrAbility client





Cab

Cab Environmental Controls





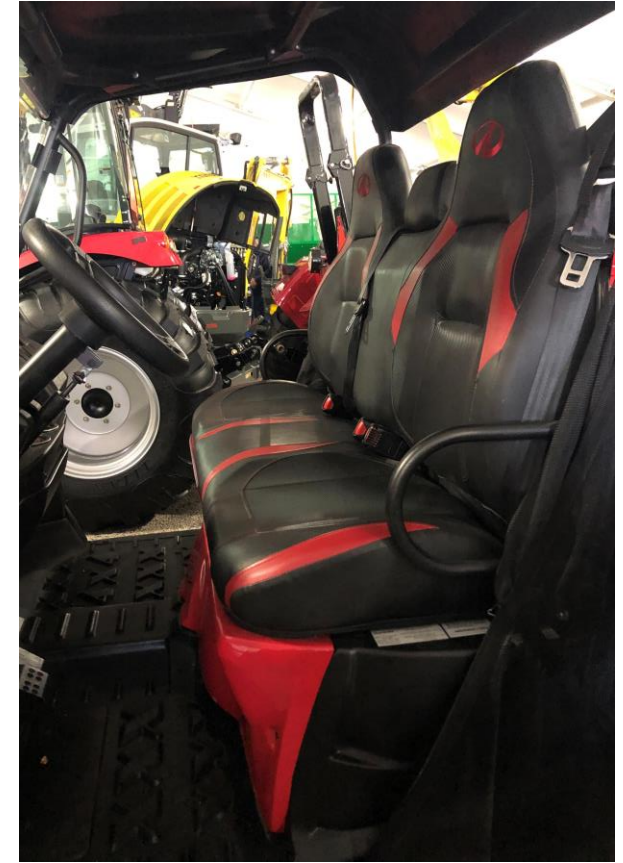
Door Handles



Door Opening

Seating





Safety Grab Bar



Operation Controls



Additional Features

- Bed Lift
- Height of Cargo Bed
- Attachments
- Special features
 - Cargo bed features
 - PTO connection
 - Tilt steering wheel
 - Power windshield wiper



Recommending a Utility Vehicle

- Compare to other mobility devices
 - Golf carts, ATVs, track chairs, etc.
- Determine work-related vs. disability-related features
- Recommendation verbiage





Thank you!

Abbie Spackman
aes5450@psu.edu

Linda Fetzer
lmf8@psu.edu

Emily Jacobson
Easterseals Nebraska-Nebraska AgrAbility
ejacobson@ne.easterseals.com