



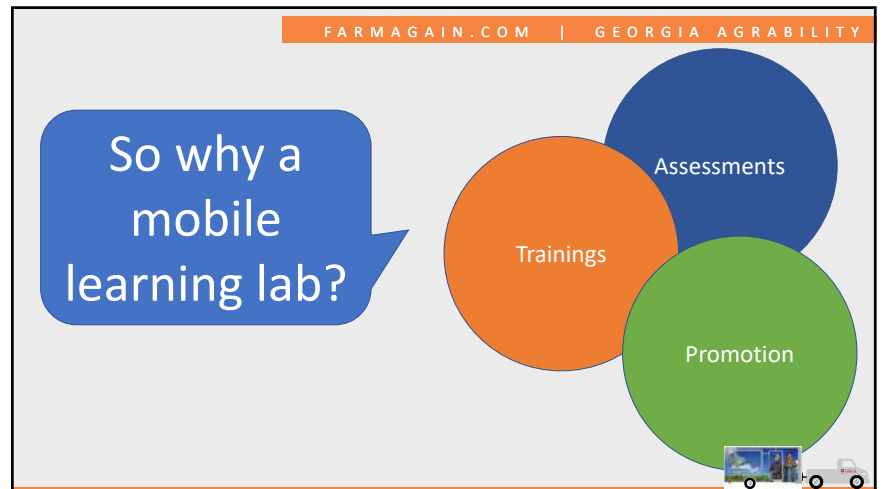
1



2



3



4

### We will review today:

- What the mobile learning lab contains
- How we use it for training, assessment, and project promotion
- How we funded it
- How much it cost to build and stock
- On-going costs
- What's next
- Open for questions



5

### Trainings

- We knew that it was important to train both medical and vocational professionals. These professionals need to believe that individuals with disabilities can successfully farm and have an understanding of how it is possible.
- We have been doing in-person workshops since 2008.
- For many years, we had limited success with our Vocational Rehabilitation program. In 2014, we strategized how to improve our outcomes. We hosted a two-day training for the group within our VR that is responsible for AT recommendations and purchases (AWT).



6

### Trainings

*Two day in-person training - classroom instruction, AT Expo with vendors present, farm tour day. CRC credits available. Co-presented with key VR staff.*



7

### Trainings

*Thank you guys for everything. I can't wait to have my first ag client with the support of this awesome team. Such an amazing and enlightening experience.*

*Staff were superior. Well organized.*

*Seeing, touching, hearing, smelling, tasting - made it all FANTASTIC and easy to learn.*

*The workshop was so well organized and streamlined. The length and pace were perfect.*

*It increased my awareness of all jobs possible in an agricultural environment.*

*Loved seeing the adaptations and getting to use them.*

*I enjoyed learning about farm accommodations at the expo. I also liked seeing the different levels of farm operations.*

*I especially enjoyed being engaged during the PowerPoint presentations. I liked the opportunities to learn by doing.*

*Fantastic - well done. Thank you!*

*Great job. Thank you all for putting this training together. Fabulous.*

*The workbooks were SO helpful.*



8

FARMAGAIN.COM | GEORGIA AGRABILITY

Trainings

- Bring training opportunities directly to key groups
- Adaptable curricula based on time availability – 1,2,3 and 4 hour options.
- A total of 4 learning stations are available. Learning stations may change over time based on training needs.

9

FARMAGAIN.COM | GEORGIA AGRABILITY

Trainings

Tools & Personal Safety

Equipment

Mobility

Technology

10

FARMAGAIN.COM | GEORGIA AGRABILITY

Trainings

station one

Tools & Personal Safety

11

FARMAGAIN.COM | GEORGIA AGRABILITY

Trainings

station two

Equipment

Tractor Lift Automatic Hitch

12

FARMAGAIN.COM | GEORGIA AGRABILITY

Trainings

station three

Mobility






13

FARMAGAIN.COM | GEORGIA AGRABILITY

Trainings


station four

Technology

Back-Up Cameras  
GPS  
Automatic Gate Openers

Photo Credits: Camera Source & Fort Valley State University




14

FARMAGAIN.COM | GEORGIA AGRABILITY

Assessments

Promotion




15

FARMAGAIN.COM | GEORGIA AGRABILITY

Assessments

- Allows the farmer to try out assistive technology to make sure that it will work for their situation.
- Helps to reduce AT abandonment.
- We are able to bring the chair to Seating Assessments so the Occupational Therapists can approve the client for the chair. They also recommend proper seating supports to match the specific wheelchair.





16

FARMAGAIN.COM | GEORGIA AGRABILITY

Promotion




17

FARMAGAIN.COM | GEORGIA AGRABILITY

### How we funded the dream

- UGA Extension offers an innovation grant each year. We were awarded \$10,000.
- Faculty at UGA may qualify to receive funds as a result of writing grants. One Co-PI invested their funds into buying equipment for the mobile learning lab.
- Fundraising – Jams and Jellies




18

FARMAGAIN.COM | GEORGIA AGRABILITY

### How much it cost to build and stock

- The trailer cost \$7,135
- The wrap to the trailer cost \$4,224
- We have purchased:
  - Action Trackchair
  - Journeyman Scooter
  - Variety of Hand Tools and Equipment Adaptations
  - Organizational Materials

19

FARMAGAIN.COM | GEORGIA AGRABILITY

### On-Going Costs

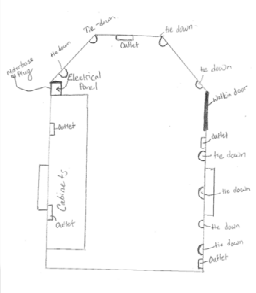
Registration - \$20  
 Insurance - \$14  
 Tires - \$150  
 Caulking - \$15  
 Grease - \$5

**Make sure to lock up your trailer!!!**



20

## Trailer Build Out



- Process took two months from the time we started getting quotes until we had the trailer in our parking lot.
- Communication is key to get everything the way that you want it.
- Check out the company who manufactures the trailer. You will probably be working with a dealer not the manufacturer.



## Future Plans

K12 Curricula Development  
 Small lift for demonstration  
 More adapted tools  
 Drone learning station  
 PTO hookup station  
 Automatic Hitch

21

22

# Questions

farmagain@uga.edu

23