



2019 AgrAbility National Training Workshop:
SustainABLE Farmers' Markets

Ketra Crosson, OTR/L
Licensed Occupational Therapist

Jill Johanning, AIA
Maine Licensed Architect

www.alphaonenow.org
207.767.2189



alphaOne
Redefining Disability

Maine Team +
OT + Architect



United States Department of Agriculture
National Institute of Food and Agriculture



Before



After



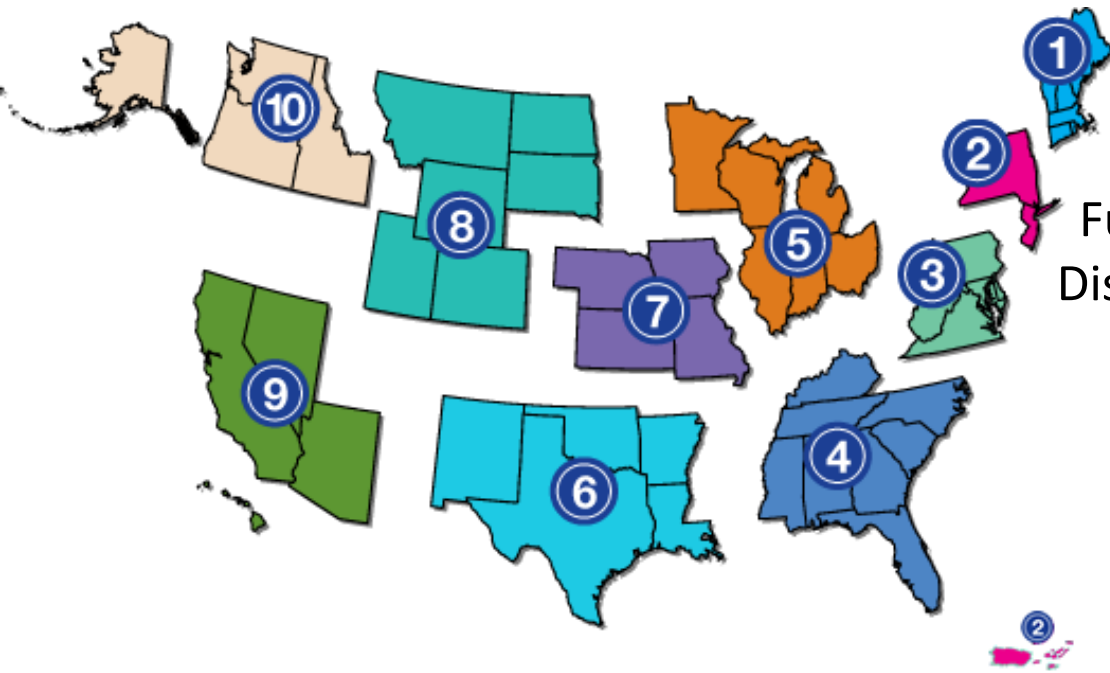
Community Gardens:
Accessible Routes from parking
to raised beds, surfaces, slopes



AgroTourism:
Public Access at Pick your own
and farm stands; AirBnB



Universal Design:
Cheese Room Research
Webinars/presentations
Demonstration beds



FREE ADA Technical Assistance

Funded by the National Institute on
Disability and Rehabilitation Research

1.800.949.4232
voice/tty

adata.org

All information provided in this presentation is intended for educational purposes from interpretations, and experiences with consumers with disabilities. The information provided should be considered as general in nature as requirements, laws and codes can vary greatly. The information provided is not intended to be used as legal advice.

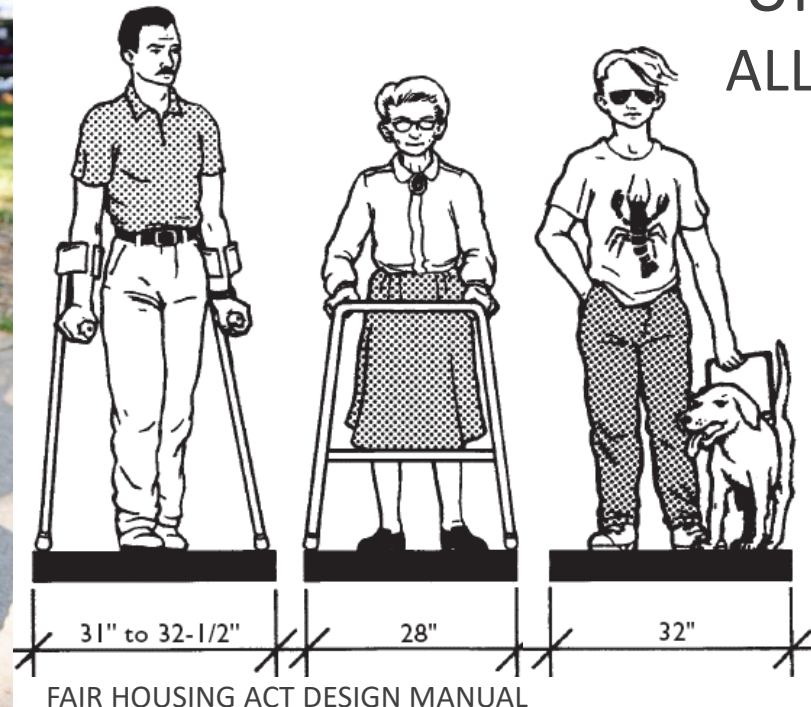


In 2017 Alpha One was contacted by the Maine Federation of Farmers' Markets to present at their annual conference on broader issues that impact the ability of people to move around public spaces like farmers' markets.

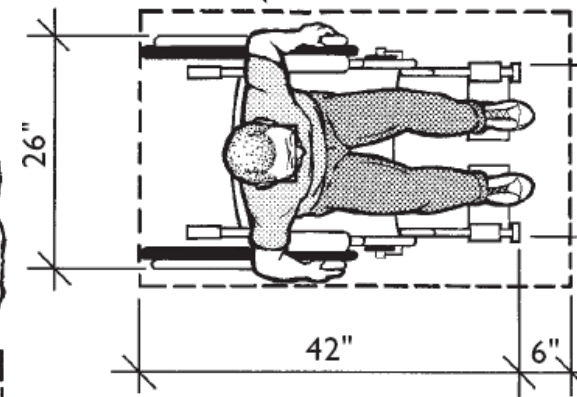




UNIVERSAL DESIGN: ALL AGES AND ABILITIES



FAIR HOUSING ACT DESIGN MANUAL



Providing minimum clearances throughout farmers' markets apply to a variety of mobility devices that customers with disabilities may use; and for customers using wagons to transport items that they have purchased.

UNIVERSAL DESIGN: ALL AGES AND ABILITIES

Providing minimum clearances throughout farmers' markets also benefit all customers including families with strollers. Wider widths benefit an adult holding a child's hand, and people that use American Sign Language (ASL).



PARKS

GRASS = POOR ACCESS

An accessible route must be firm, stable, and slip resistant.

Consider temporary products that can be secured to surfaces to provide accessible routes over grass.



PARKS



If the location of the farmers' market allows - consider the layout of the vendors to be along a level paved sidewalk to provide safe access between vendors.



Note that street curbs or other changes in level create barriers if vendors are located along a sidewalk in the street.

PARKING LOTS

FIRM, STABLE AND
SLIP RESISTANT

Parking lots provide
better accessible
surfaces including
seasonal wet weather.

Review for ongoing
maintenance of
surfaces.

Temporary power can
create trip hazards;
review location out of
traffic flow, and low
slope covers.



PARKING LOTS

FIRM, STABLE AND
SLIP RESISTANT

Non paved parking lots may also be considered if it is a fine surface that is compacted.



ACCESSIBLE PARKING



If the farmers' market is located in a parking lot are vendors preventing access to the accessible parking spaces?

Where are people with disabilities able to park to access the market?

TEMPORARY ACCESSIBLE PARKING

Provide temporary accessible parking near the farmers' market with the use of portable signs. Or review with the property owner opportunity to relocate permanent accessible parking. Review locations that are level and provide a curb ramp with no barrier to the market area.



CLEARANCES

Maintain a minimum of 36 inches of clearance throughout the walkways and through vendor displays.

Review sandwich board locations to increase circulation space for all customers.



COUNTERS

36 INCHES HIGH MAX

Provide 36 inch high maximum counter that is clear of obstructions including product display for purchasing items at the register area.





POINT OF SALE

Individuals with disabilities have varying hand function and strength. They may have lifting limits.

Mobility aids typically require the full time use of hands – walker, cane, manual wheelchair, joystick. This does not always leave ones hands free to make payment or carry things.

CUSTOMER SERVICES

Solutions

- Make a clear spot on your table where items can be set down, or a purse can be opened to get out payment
- Electronic payment options can be easier for some individuals than handling paper money and coins
- Provide take home packaging to meet a variety of needs
- Recycled bags with handles can be hung over canes of a wheelchair





CUSTOMER SERVICE

Solutions

- Provide small baskets that can sit on someone's lap or seat of a rolling walker
- If the person's vehicle is close by, offer to carry packages to their vehicle
- Provide wheeled shopping carts
- Provide information to purchase baskets and wheeled shopping carts on your website
- Sell reusable bags with handles as a fundraiser and advertisement for the farmers market



SIGNS



Provide product information with name and price in large clear print with contrasting colors.

SIGNS

Review heights of signs.
Consider placings signs
on posts for items that
are displayed on the
ground.



The ADA accessible
reach range is between
15 – 48 inches above the
ground.



PROTRUDING OBJECTS

All items in the circulation path need to provide a minimum clearance of 80 inches. Review future tent purchases for height clearances.

Consider placing tables or displays below hanging items to keep customers from bumping into items above.

PROTRUDING OBJECTS

Consider placing hanging signs at the back of the vendor tent to increase access and prevent customers from getting hurt or products from getting damaged.

Weather conditions can also impact customers' vision with the use of umbrellas, for example.





FURNITURE

PLACES TO REST

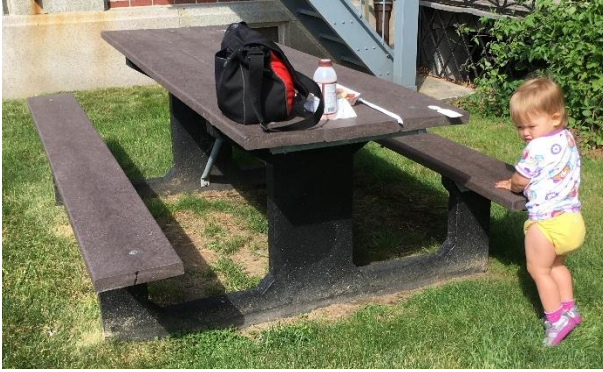
Providing outdoor furniture is a good opportunity for all customers to rest and stay longer.



Review location of benches or tables to be on or along an accessible route with firm and stable surfaces.

FURNITURE

PLACES TO REST



Provide picnic tables with an open end for a mobility device to sit at the table; consider tables with low supports to allow easier access onto the bench.

Provide space beside benches to allow shoulder-to-shoulder seating with friends and family, or even strollers and carts, to be out of the circulation path.



WINTER MARKETS

PARKING

FIRM, STABLE AND SLIP
RESISTANT SURFACE

CLEARANCES

COUNTERS

PLACE TO REST

PROTRUDING OBJECTS

SIGNS

CUSTOMER SERVICE





[About MFFM](#)

[Market Managers](#)

[Market Members](#)

[Shoppers](#)

Find a Market

Looking for a farmers' market in your area? Use our searchable database to find farmers' markets near where you live, work, or visit!... [Read More](#)

Farmers markets offer SNAP incentives!

Some things to consider:

Vision disability:

- If you have a picture, provide a text equivalent – either part of a narrative or an actual picture descriptor
- Consider Font type and size (12 or greater)
- Consider using contrasting colors
- Videos with audio descriptions
- If something is offered in a PDF format, also offer it in a text based format

Hearing disability:

- Videos to have captions

WEBSITE + SOCIAL MEDIA

Is your website or social media platform usable by a person with a visual impairment, hearing impairment, or someone using assistive technology to access a computer or tablet?



[Home](#) | [Blog](#) | [Contact Us](#) | 207-487-7114



[About MFFM](#)

[Market Managers](#)

[Market Members](#)

[Shoppers](#)

Find a Market

Looking for a farmers' market in your area? Use our searchable database to find farmers' markets near where you live, work, or visit!... [Read More](#)

[Read More](#)

Farmers markets offer SNAP incentives!

Use your site to describe accessibility at your farmers market

Example:

FAQ's

Is the Market wheelchair accessible? Are there wheelchairs available?

Disabled parking is available in front of Moultrie Middle School. The paved pavilion is ideal for wheelchairs, and there are ramps. We do not have wheelchairs available

Is the market accessible to wheelchairs, crutches, and walkers? Yes. There is a wooden floor throughout the pavilion and vehicles can let off people with disabilities right next to the main entrances. You may prefer to come on Sundays when it is less crowded and more leisurely.

WEBSITE + SOCIAL MEDIA

Some resources for site design

<http://www.washington.edu/accessibility/web/>

<https://www.facebook.com/help/141636465971794>

<https://www.siteimprove.com>



2019 AgrAbility National Training Workshop

Ketra Crosson, OTR/L
Licensed Occupational Therapist

Jill Johanning, AIA
Maine Licensed Architect

www.alphaonenow.org

207.767.2189

South Portland Bangor Presque Isle