



United States
Department of
Agriculture

National Institute
of Food
and Agriculture



FOOD PRODUCTION
AND SUSTAINABILITY



BIOENERGY, CLIMATE,
AND ENVIRONMENT



YOUTH, FAMILY,
AND COMMUNITY



FOOD SAFETY
AND NUTRITION



INTERNATIONAL
PROGRAMS



USDA NIFA

NATIONAL INSTITUTE OF FOOD AND AGRICULTURE



United States
Department of
Agriculture

National Institute
of Food
and Agriculture

USDA/NIFA Welcome

Aida Balsano

National Institute of Food and Agriculture (NIFA)

2019 AgrAbility NTW

March 25, 2019

Lincoln, NE

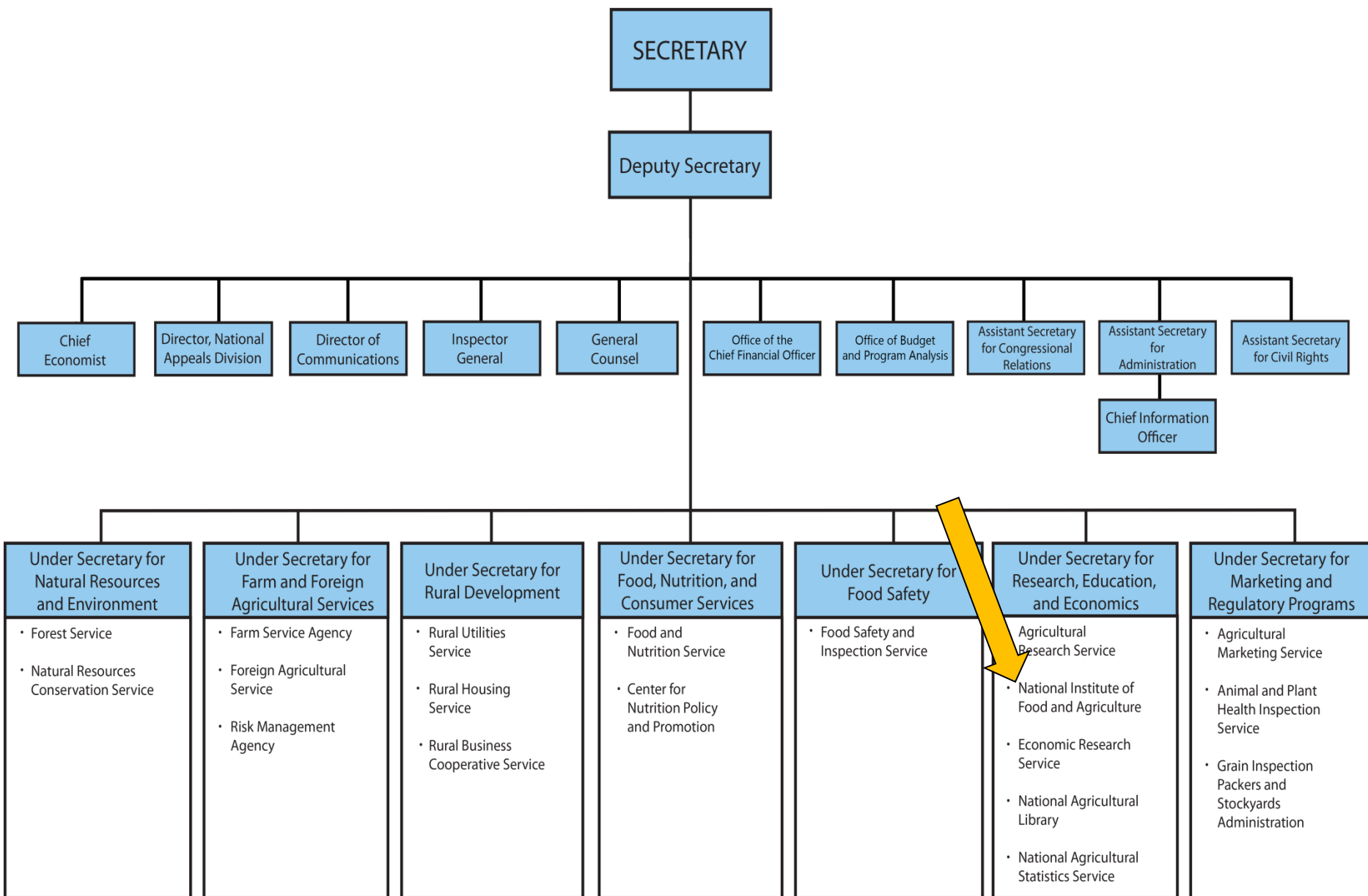


United States
Department of
Agriculture

National Institute
of Food
and Agriculture

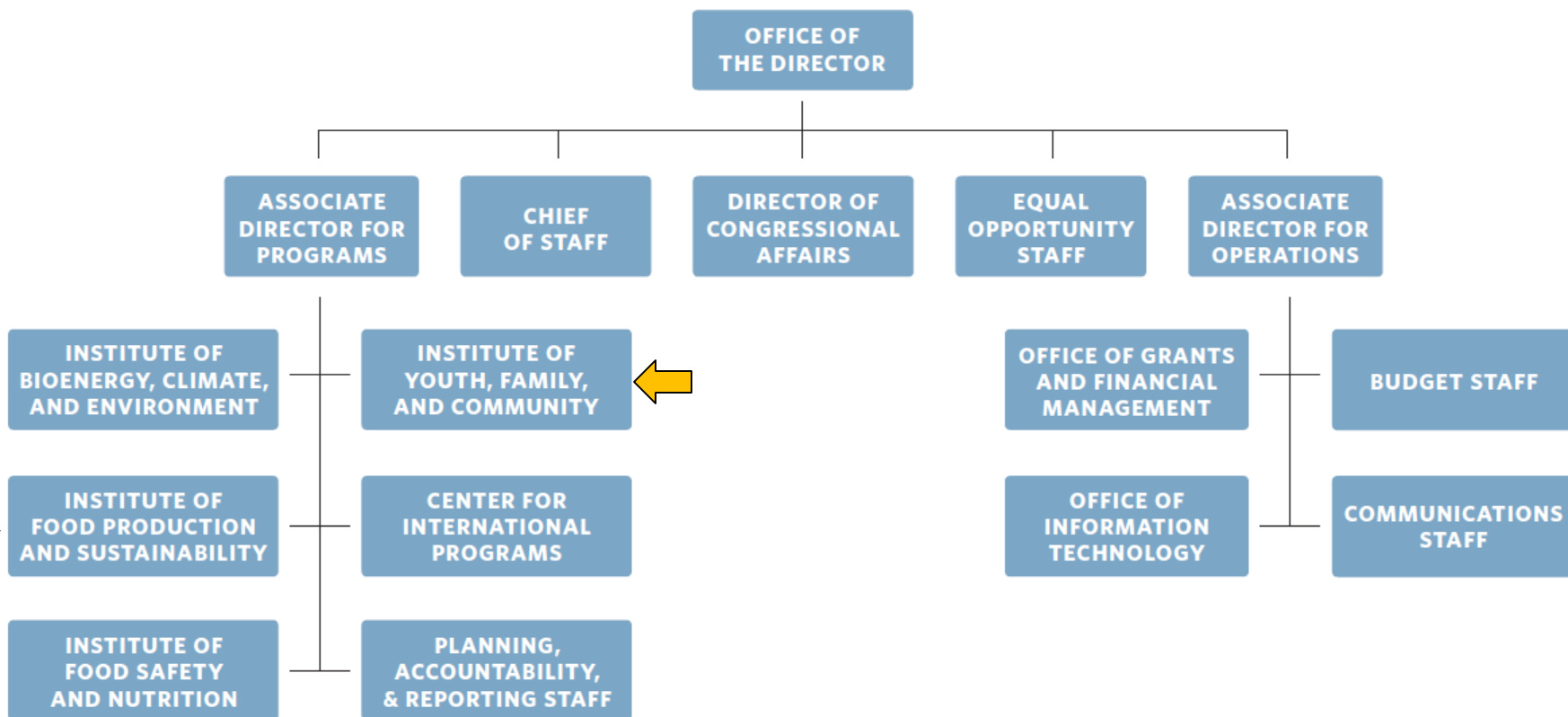
Overview

- USDA and NIFA
- NIFA AgrAbility Program Management
- About the AgrAbility Program
- Functions, Roles and Expectations
- Reporting Requirements
- Contact



The Organization of USDA'S NATIONAL INSTITUTE OF FOOD AND AGRICULTURE — 2.23.14

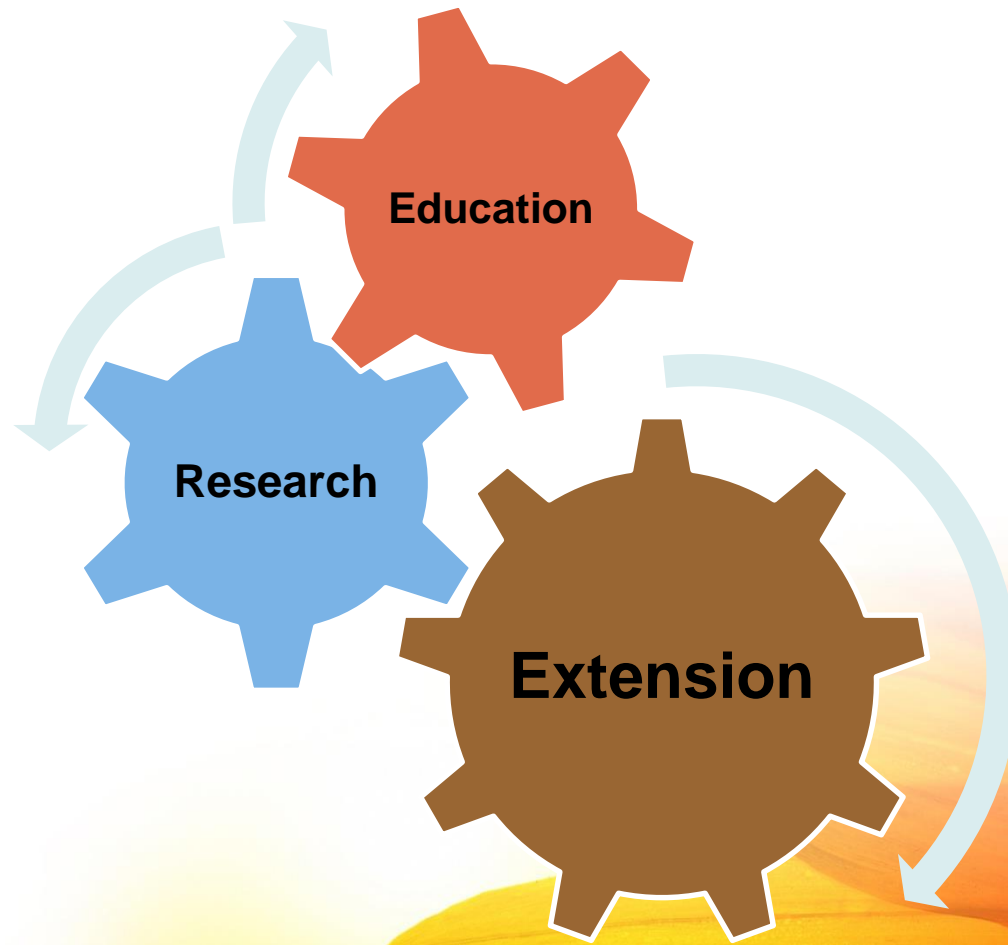
OVERVIEW VERSION



NIFA's Integrated Approach to Science



NIFA's Integrated Approach to Science





United States
Department of
Agriculture

National Institute
of Food
and Agriculture

AgrAbility Oversight at NIFA

Caroline Crocoll

Division Director

Family & Consumer Sciences



Brad Rein

Division Director

Agricultural Systems



Aida Balsano, Ph. D.

National Program Leader

Division of Family & Consumer Sciences

Institute of Youth, Family and Community



Steven Thomson, Ph. D.

National Program Leader

Division of Agricultural Systems

Institute of Food Production and Sustainability



Lelan Dixon, M.A.

Program Specialist with DAS/IFPS





United States
Department of
Agriculture

National Institute
of Food
and Agriculture

AgrAbility Program Mission

*Support state and regional projects in developing their **capacity** to provide **assistance** to **individuals with disabilities**, and their families, who are engaged in **farming and farm-related occupations**.*



United States
Department of
Agriculture

National Institute
of Food
and Agriculture

Disability Language vis-à-vis AgrAbility

The person first and the disability second - Person-First Language (farmer with a disability vs. disabled farmer).

Emphasis is on abilities and assistive technology role, not limitations.

Use language that emphasizes the need for accessibility rather than the presence of a disability.

Create balanced human interest stories.



United States
Department of
Agriculture

National Institute
of Food
and Agriculture

History of AgrAbility

- Authorized through the 1990 Farm Bill.
 - Modeled after state programs that assisted agricultural workers in VT, IA, and IN.
 - Authorized partnership between LGU and non-profit organizations serving individuals with disabilities.
 - Established funding recommendation.
 - Provided guidance on eligible programs.
- Appropriated under Smith-Lever 3(d)

Farm Safety and Youth Farm Safety line item

NG IN SCIENCE | SECURING OUR FUTURE | WWW.NIFA.USDA.GOV



United States
Department of
Agriculture

National Institute
of Food
and Agriculture

History of AgrAbility cont.

- Competitive grants program.
- The program funds:
 - State and Regional AgrAbility Projects (SRAPs);
 - one National AgrAbility Project (NAP).
- Projects are funded for up to 4 years.



United States
Department of
Agriculture

National Institute
of Food
and Agriculture

AgrAbility Program Focus

- Increased knowledge of practices and activities for farmers with disabilities.
- Increased appropriate assistance options.
- Improved modifications that increase independence and productivity.
- Increased chance that individuals with disabilities and their families can continue to be successfully involved in production agriculture.



United States
Department of
Agriculture

National Institute
of Food
and Agriculture

AgrAbility Program Implementation

- Education - long term investment strategy
- Assistance
- Marketing
- Networking
- Evaluation



United States
Department of
Agriculture

National Institute
of Food
and Agriculture

AgrAbility Funds DO NOT Support

- Paying for assistive technology or other farm site modifications
- Soliciting other federal funds
- Paying tuition or student fees
- Paying overhead or indirect cost
- Conducting research (work must remain within accepted bounds of Extension)



United States
Department of
Agriculture

National Institute
of Food
and Agriculture

Federal Level Functions (NIFA's Role)

- Satisfy Legislative and Executive branches
- Provide fair, effective, and efficient administration of Federal assistance.
- Provide program oversight.
- Communicate program successes and impacts to NIFA, USDA, Congress and stakeholders to justify continued support for the program.



United States
Department of
Agriculture

National Institute
of Food
and Agriculture

NAP's Role

- Grantee of the NIFA AgrAbility Program.
- Assists and connects SRAPs.
- Limited, on-demand service in areas without SRAPs.
- Outreach to 1890 LGUs, 1994 LGUs, and farmer veterans.
- NTWs
- Annual program evaluations



United States
Department of
Agriculture

National Institute
of Food
and Agriculture

SRAPs' Role

- Inform us if you have a change in or reorganization of project staff, and/or program implementation challenges.
- Attend face-to-face and virtual NTWs.
- Submit client demo data to NAP staff on time.
- Participate in NAP needs assessments and evaluation.
- Participate in NAP-led Quality of Life survey.
- Keep your directors, colleagues, and NIFA informed of any significant recognitions of your project.
- Submit your application for project funding continuation on time.

States with Currently Active AgrAbility Projects

State/Regional AgrAbility Projects

- Alaska
- California
- Colorado
- Georgia
- Illinois*
- Indiana*
- Kansas
- Maine
- Michigan
- Missouri
- Nebraska
- New Mexico
- North Carolina*
- Ohio
- Pennsylvania
- South Dakota
- Tennessee
- Texas
- Utah
- Wisconsin

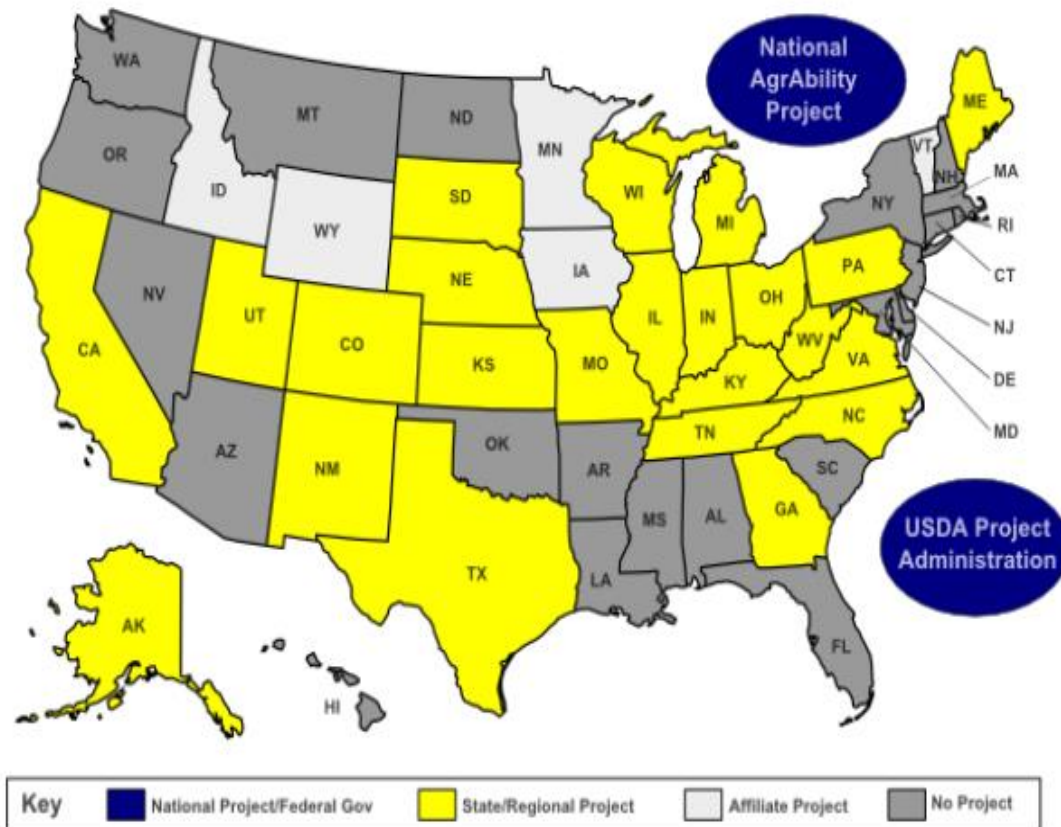
National AgrAbility Project

Indiana (Purdue University)

www.agrability.org

AgrAbility Projects Directory

Select one of the states below to view the contact information for that state or region:



Alaska - Arkansas - California - Colorado - Georgia - Idaho - Illinois - Indiana - Iowa - Kansas - Kentucky - Maine - Michigan - Minnesota - Missouri - Nebraska - New Mexico - North Carolina - Ohio - Pennsylvania - South Dakota - Tennessee - Texas - Utah - Vermont - Virginia - West Virginia - Wisconsin - Wyoming



United States
Department of
Agriculture

National Institute
of Food
and Agriculture

REEReport

- To determine satisfactory progress of the project.
 - Progress Report
 - Annually, for 1st, 2nd or 3rd year of funding.
 - Final Report
 - At the end of year 4, i.e. final year of funding.



United States
Department of
Agriculture

National Institute
of Food
and Agriculture

REEport cont.

<http://portal.nifa.usda.gov>

- REEport Information and Resources:
<http://nifa.usda.gov/tool/reeport>
- Technical Assistance: reeport@nifa.usda.gov

How Do We Use Your Reports?



National Program Leaders

- Program Management
- RFA Improvements



PARS

- Evaluations, Strategic Planning
- Performance Measurement, Needs Assessment, Systems Improvements, Ad-Hoc Requests



Communications

- NIFA Annual Report
- Marketing and Promotion
- Branding



Office of the NIFA Director

- Presentations/Speeches
- Requests for Additional Funds
- Audits



Congress

- Budget Justifications
- Outcomes Reporting
- Fiscal Planning



Other USDA Offices

- Process Improvements
- Collaboration and Networking



United States
Department of
Agriculture

National Institute
of Food
and Agriculture

Contact Information

Aida Balsano

National Program Leader

abalsano@nifa.usda.gov

(202) 720-4436

Steve Thomson

National Program Leader

steven.j.Thomson@nifa.usda.gov

(202) 401-6301

Lelan Dixon

Program Specialist

lelan.d.dixon@nifa.usda.gov

(202) 401-6950



United States
Department of
Agriculture

National Institute
of Food
and Agriculture

FOOD PRODUCTION
AND SUSTAINABILITY

BIOENERGY, CLIMATE,
AND ENVIRONMENT

YOUTH, FAMILY,
AND COMMUNITY

FOOD SAFETY
AND NUTRITION

INTERNATIONAL
PROGRAMS

USDA NIFA

NATIONAL INSTITUTE OF FOOD AND AGRICULTURE