

# Overview of Resources of the Northeast Center for Occupational Health and Safety

2018 AgrAbility National Training Workshop  
Portland, ME

Jim Carrabba  
Agricultural Safety  
Specialist

**NEC**





Bassett Healthcare Network  
New York Center for Agricultural  
Medicine and Health

# New York Center for Agricultural Medicine and Health-NYCAMH



Bassett Healthcare Network  
New York Center for Agricultural  
Medicine and Health

# Northeast Center for Occupational Health-NEC





**Bassett Healthcare Network**  
New York Center for Agricultural  
Medicine and Health

# **Bassett Healthcare Network Based in Cooperstown, NY**



# NYCAMH



Bassett Healthcare Network  
New York Center for Agricultural  
Medicine and Health

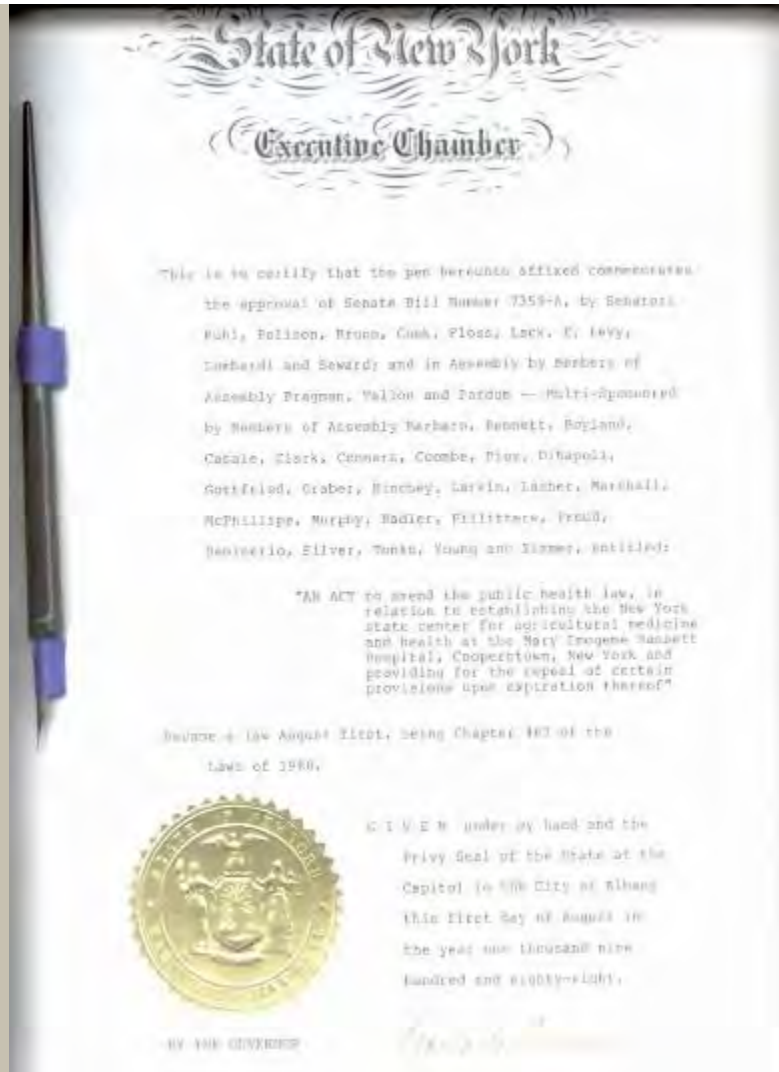
## Established by NY State Legislature 1987

**Research into causes of increased  
rates of illness and injury in NY  
agriculture**

**Prevention activities**

**Education of farm community and  
professionals serving this  
community**

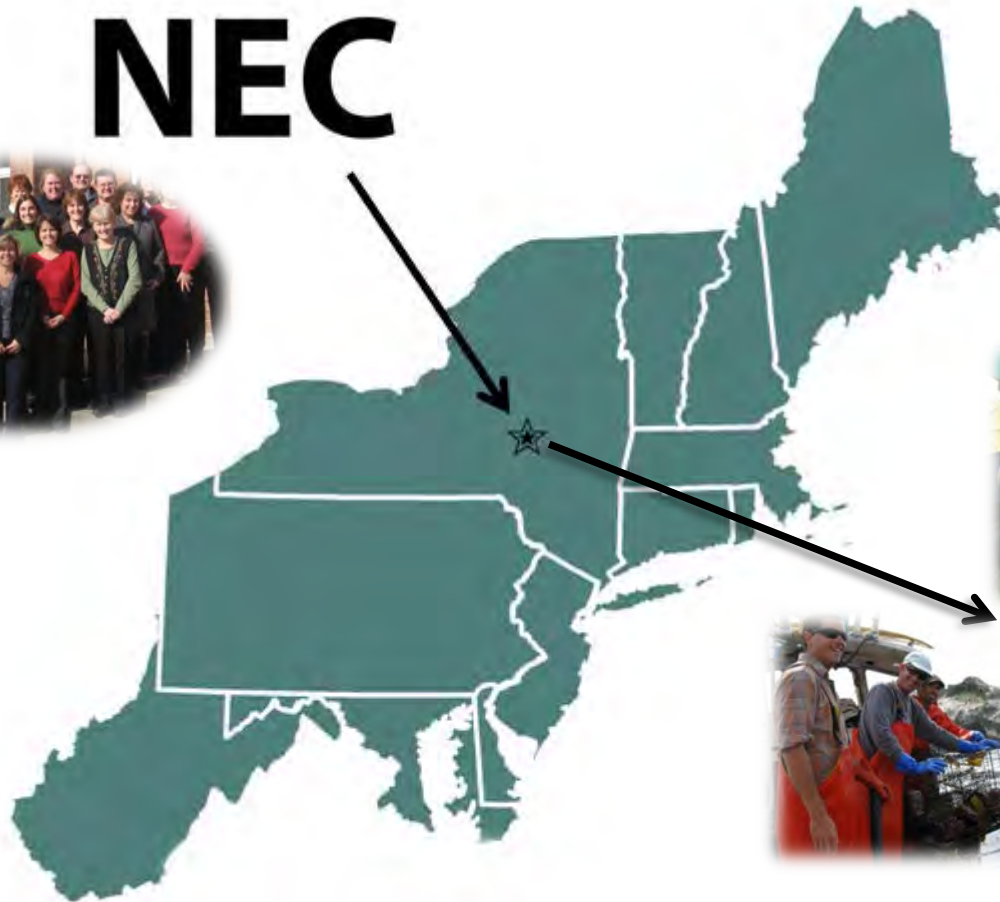
**Clinical services**





# The NEC Coverage Area

# NEC



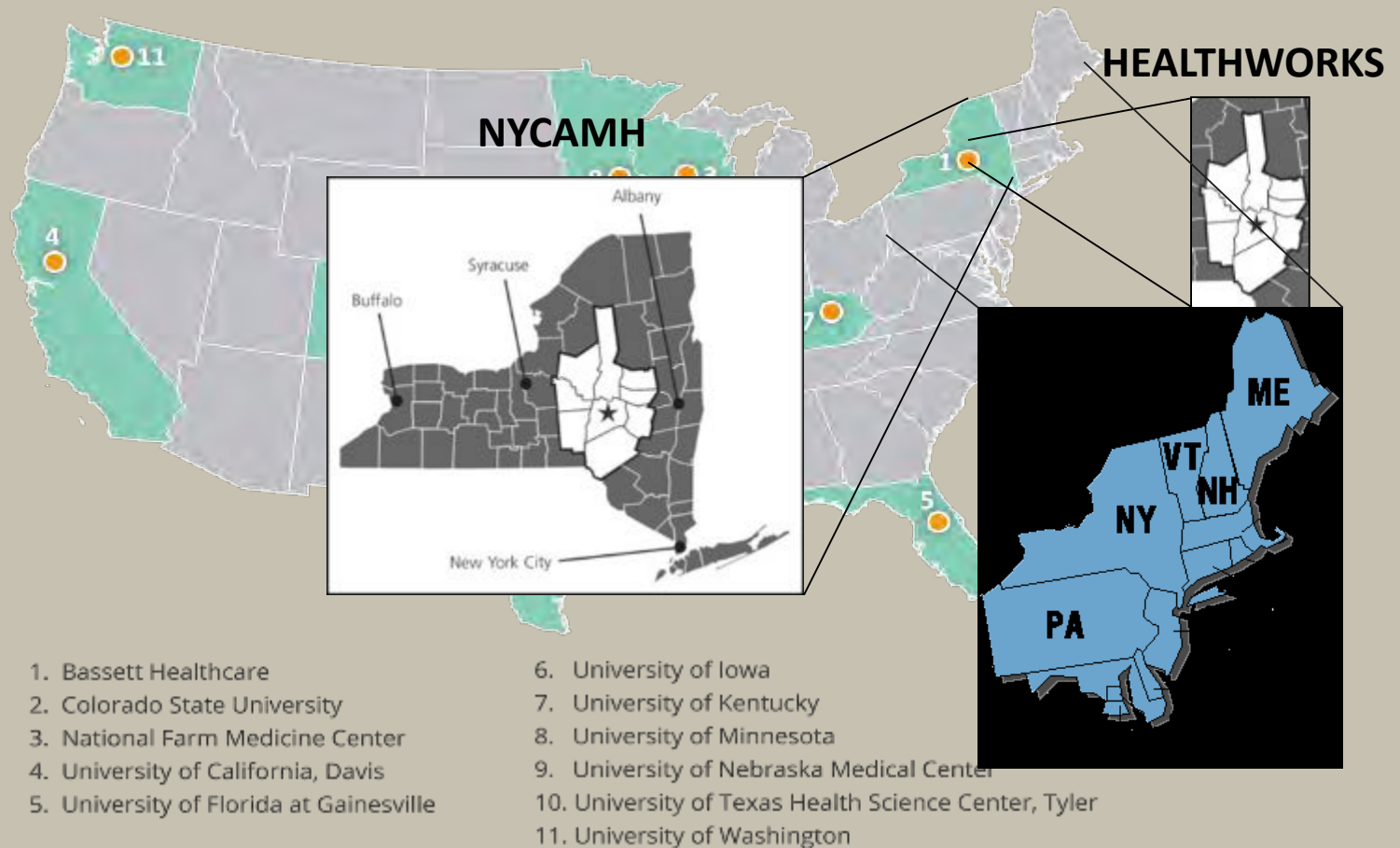


# THE MANY FACES OF NYCAMH



Bassett Healthcare Network  
New York Center for Agricultural  
Medicine and Health

NIOSH Centers for Agricultural Safety and Health





**NEC's Mission: "Enhance the health of AFF workers by identifying priority health and safety issues and working with AFF communities and stakeholders to develop prevention solutions."**

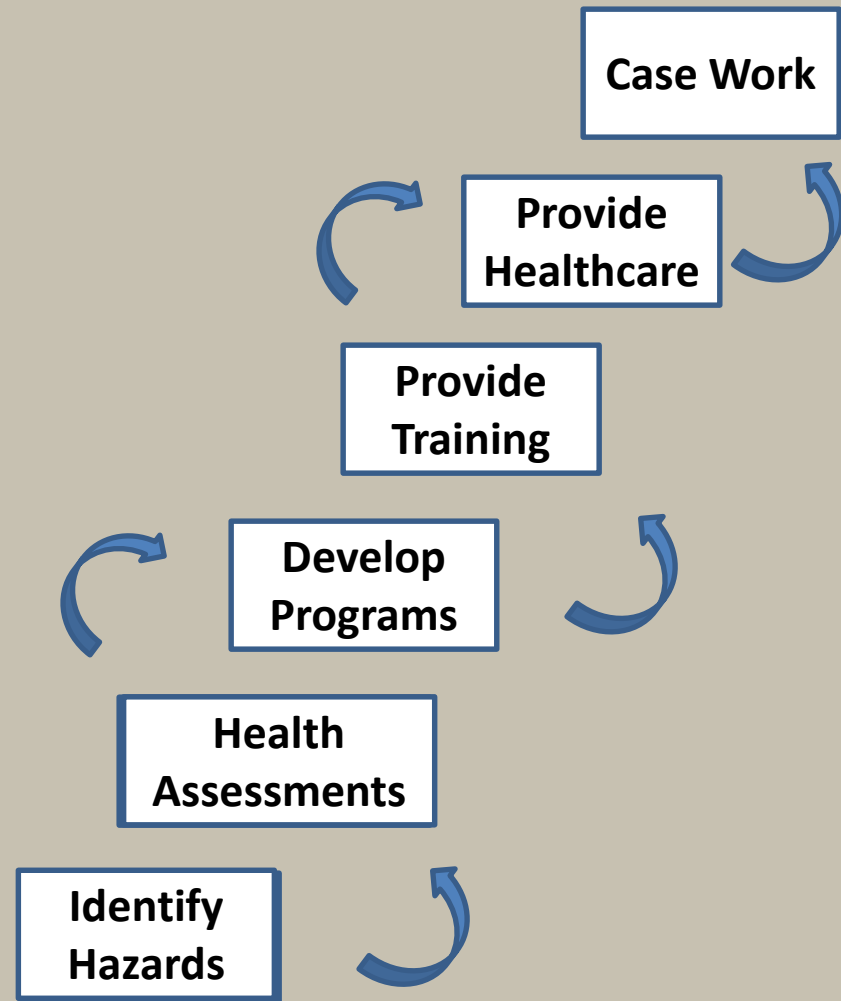


# ***NEC STAFF EXPERTISE***



Bassett Healthcare Network  
New York Center for Agricultural  
Medicine and Health

- Epidemiologists
- Biostatisticians
- Social worker
- Information specialist
- OH nurses
- Educators
- Physicians
- Bilingual safety specialists
- etc...







New York Center for Ag x Northeast Center for Oc x

www.necenter.org

NEC  
Northeast Center for Occupational Health and Safety  
Agriculture • Forestry • Fishing

Home Agriculture Forestry Fishing NEC Activities Press Room

Agriculture Forestry Fishing

Contact NEC PPE Online Catalog NYCAMH & NEC Research Library & Info Center

2:29 PM 3/16/2018

# My Background



Bassett Healthcare Network  
New York Center for Agricultural  
Medicine and Health

**MS, Ag Safety,  
Purdue University  
BS, Ag Education,  
UNH -TSAS**

**Dairy Farm Worker  
Assistant Herdsman  
Farm Machinery  
Operator**



# My Background



Bassett Healthcare Network  
New York Center for Agricultural  
Medicine and Health

## Heavy Equipment Operator

NY Air National  
Guard

23 years

MSgt (Ret)





# ***FUNDING SOURCES***



**Bassett Healthcare Network**  
New York Center for Agricultural  
Medicine and Health

## **FEDERAL FUNDING (CDC)**

Agriculture, Forestry and Fishing Research —————→ The Northeast

## **STATE FUNDING (DOH)**

Occupational Health and Safety Services —————→ New York

## **STATE FUNDING (DOL)**

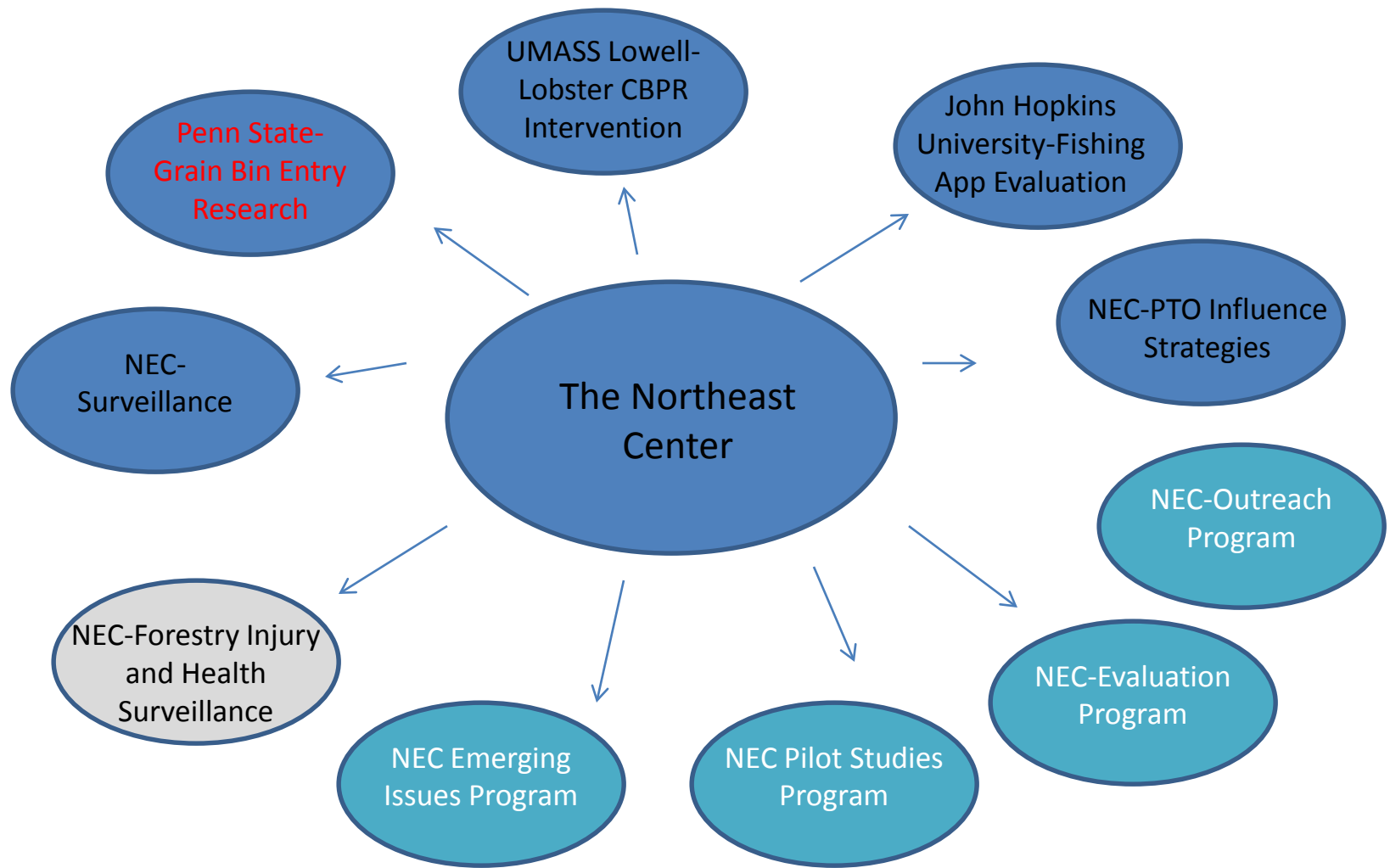
Agricultural safety training and worksite inspections —————→ New York

## **OTHER FUNDING**

Farm Emergency Mapping, John May Safety Fund —————→ New York



# 2016-2021 Center Projects



# Farming is Dangerous



Bassett Healthcare Network  
New York Center for Agricultural  
Medicine and Health

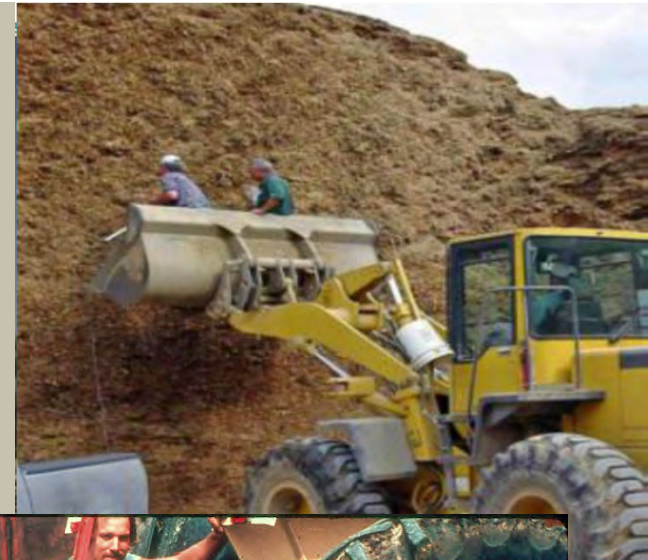


# Farming and Risk

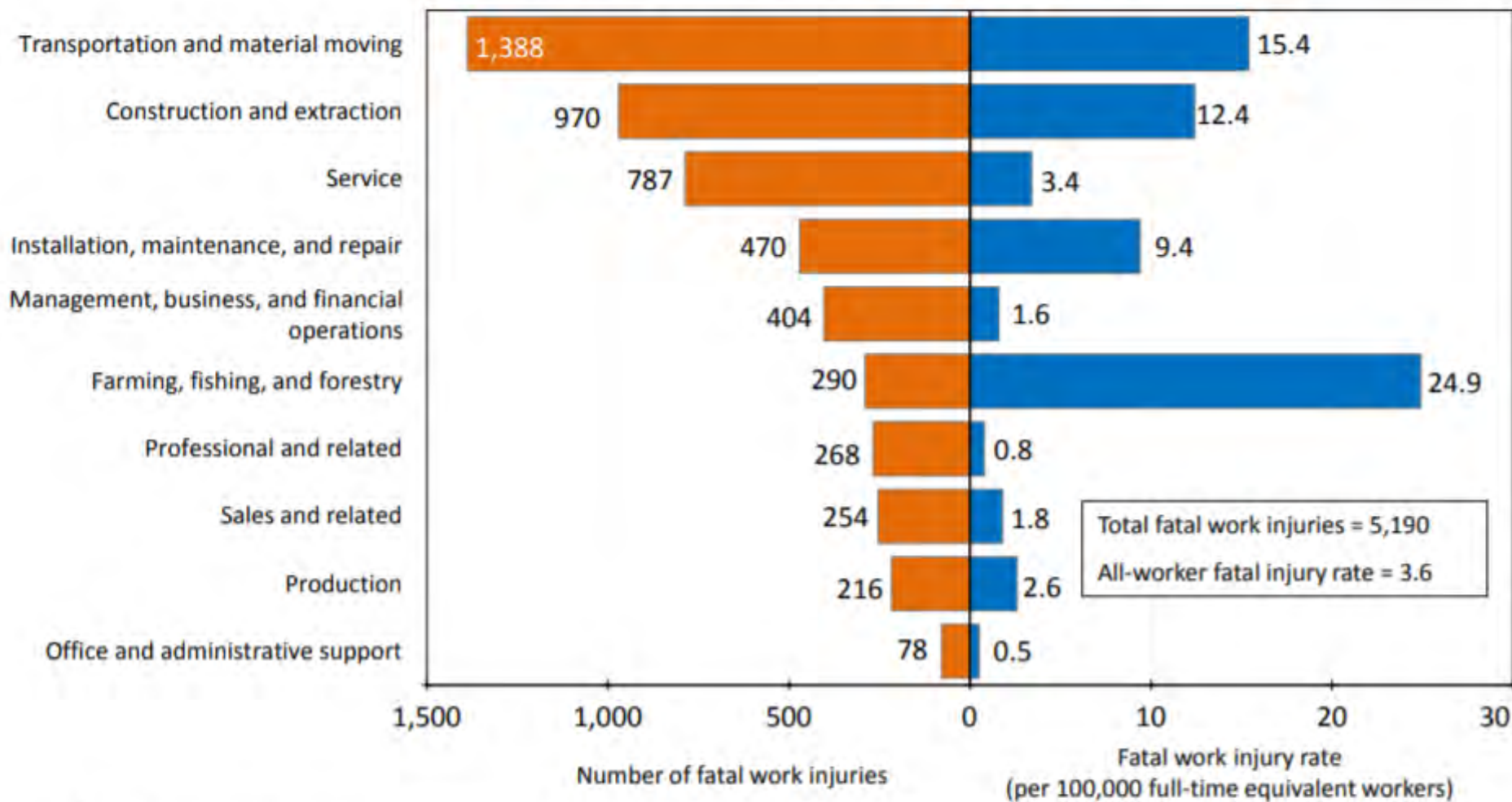


Bassett Healthcare Network  
New York Center for Agricultural  
Medicine and Health

**Farming is a gamble  
Used to risk  
Generally do not view  
safety hazards as big  
risks to worry about**

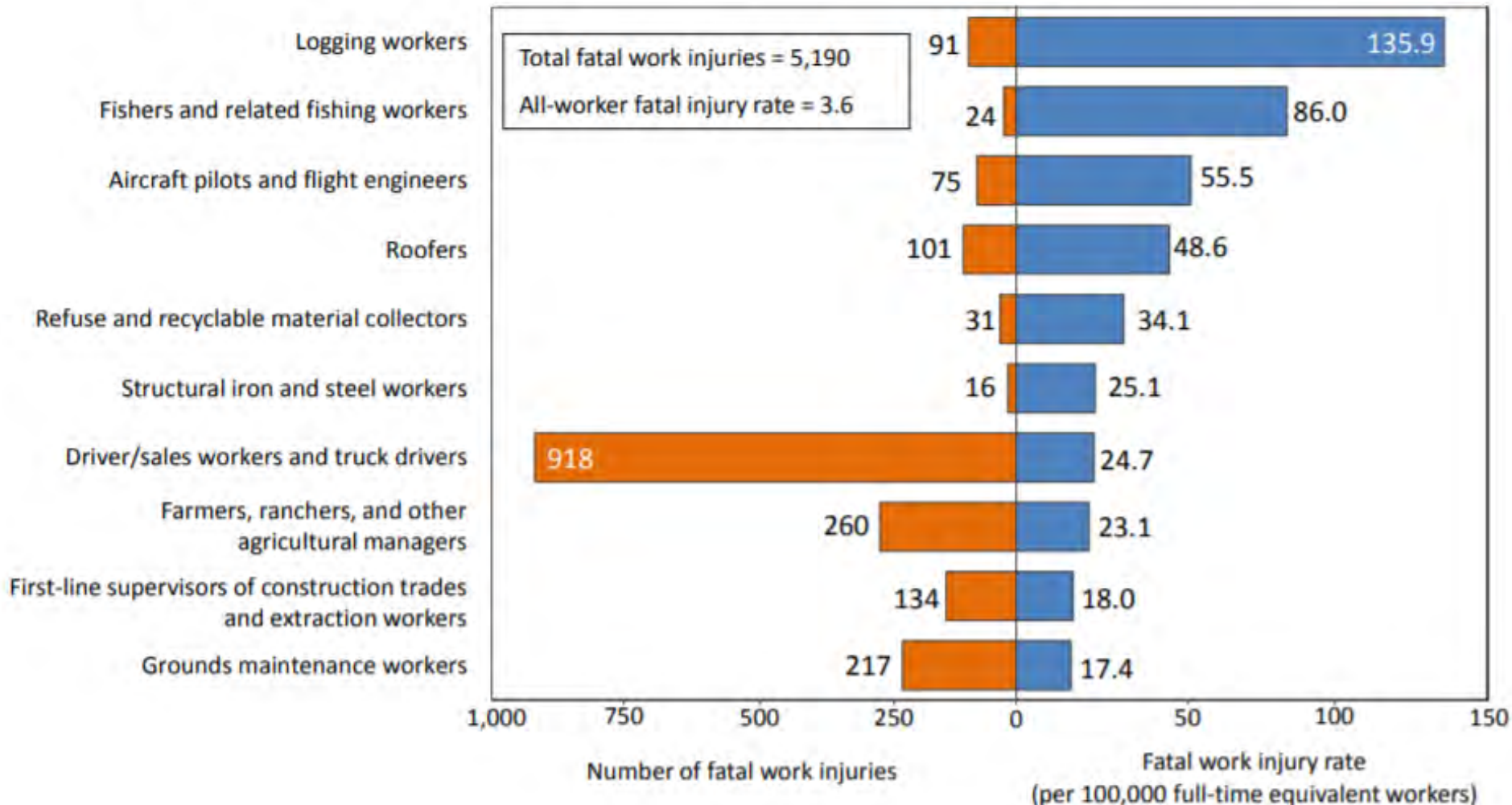


## Number and rate of fatal occupational injuries to civilian workers by major occupation group, 2016



- Transportation and material moving occupations had the highest number of fatal work injuries in 2016.
- Farming, fishing, and forestry occupations had the highest fatal work injury rate in 2016.

# Civilian occupations with high fatal work injury rates, 2016



- In 2016, fatal work injury rates were high for logging workers and fishers and related fishing workers.
- Driver/sales workers and truck drivers incurred the greatest number of fatal injuries.

# Farm Hazards



Bassett Healthcare Network  
New York Center for Agricultural  
Medicine and Health

- **Traumatic injuries**
- **Respiratory**
- **Noise/hearing loss**
- **Chemical/pesticide exposures**
- **Musculoskeletal disorders**
- **Environmental**
- **Health and wellness**
- **Stress**

# Types of Incidents



Bassett Healthcare Network  
New York Center for Agricultural  
Medicine and Health

- **Tractors**
- **Machinery-related (PTO's, power shafts, augers)**
- **Roadway/motor vehicle incidents**
- **Slips and falls (from ladders, hay mows, into manure pits, etc.)**
- **Livestock handling (cows, bulls, horses)**
- **Asphyxiation/Engulfments (manure gases, grain bins, silos)**
- **Musculoskeletal injuries**
- **Hand injuries**

# Agriculture has Unique Aspects



Bassett Healthcare Network  
New York Center for Agricultural  
Medicine and Health

- **Use large machinery and equipment**
- **Lots of older equipment still in service**
- **Large animals**
- **Senior farmers at risk**
  - **What is the retirement age in farming?**
- **Immigrant workers and language barriers**
- **Children perform farm work or are exposed to hazards**

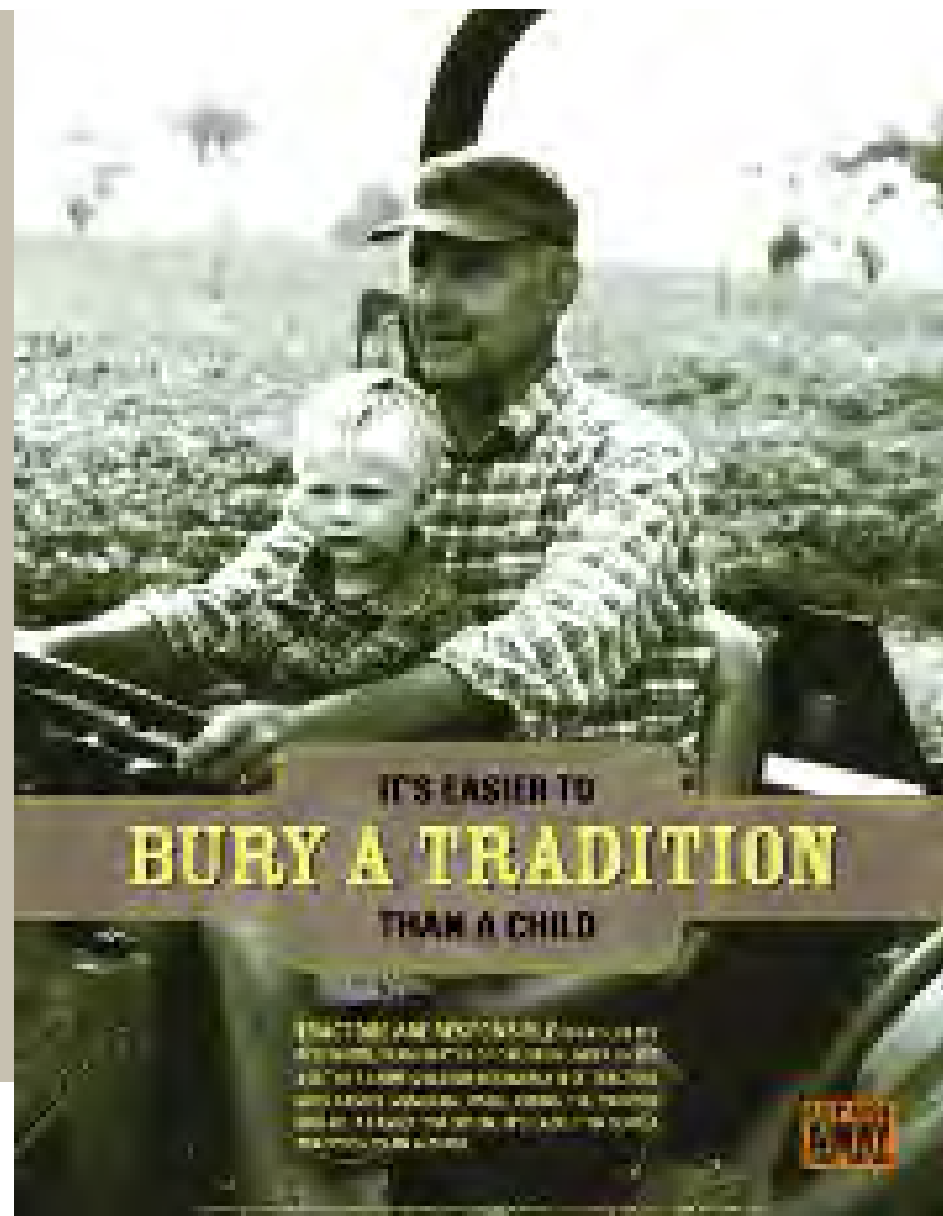


**Bassett Healthcare Network**  
New York Center for Agricultural  
Medicine and Health

**(under 20 years old)**

## 2/3 are bystander deaths

- **33 injured each day**



# Agriculture has Unique Aspects



Bassett Healthcare Network  
New York Center for Agricultural  
Medicine and Health

- **Operate in some hazardous conditions**  
Extreme weather, steep slopes, long hours could have 2<sup>nd</sup> job, work alone for long periods of time
- **EMS services not always readily available**
- **Increased exposure for motor vehicle crashes**
- **OSHA health & safety standards not enforced on small farms (less than 11 employees)**

# New York Ag Fatalities



Bassett Healthcare Network  
New York Center for Agricultural  
Medicine and Health

**2014 -22**

**2013-16**

**2012-13**

**2011-19**

**2010-27**

**2009-14**

**2008 - 20**

**2007- 22**

**2006 - 25**

***2016 – 12***

***Most were tractor  
rollovers (5)***

**•Struck-by incidents (5)**

***2015 - 19 deaths***



# Main Types of Tractor Related Fatalities

## Overturns

- most common

## Runovers

## Power take off (PTO)

## entanglements

## Roadway incidents



# THE NATIONAL ROPS REBATE PROGRAM



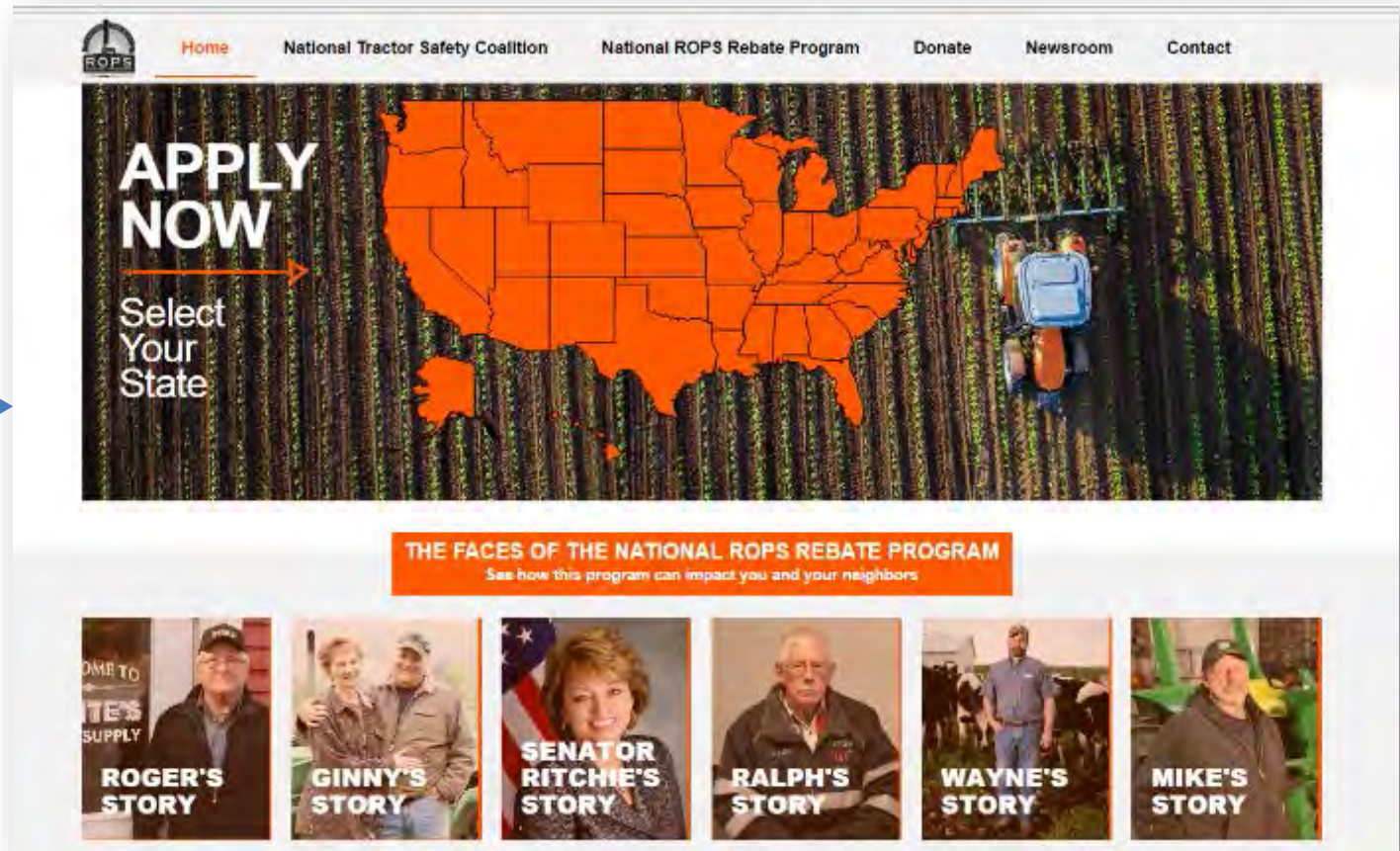
Bassett Healthcare Network  
New York Center for Agricultural  
Medicine and Health

Pilot  
Research  
2006

Statewide  
Program

PA, VT & NH  
Expansion  
2010-2011

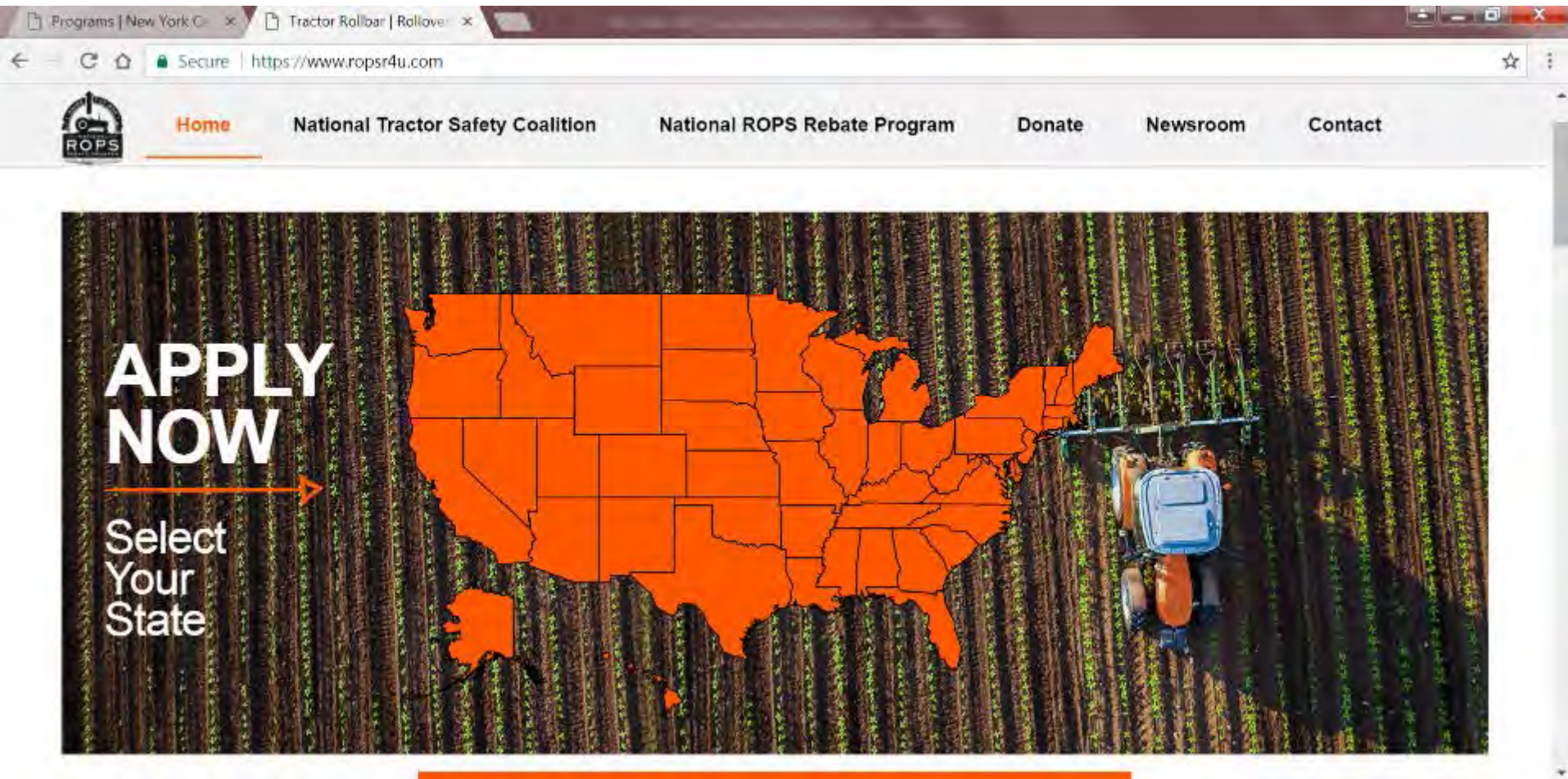
Add MA,  
WI, MN,  
2013-16



# THE NATIONAL ROPS REBATE PROGRAM



Bassett Healthcare Network  
New York Center for Agricultural  
Medicine and Health



# ***THE NATIONAL ROPS REBATE PROGRAM***



Bassett Healthcare Network  
New York Center for Agricultural  
Medicine and Health



**1-877-ROPS-R4U**

**(1-877-767-7748)**

**[info@ROPSr4u.com](mailto:info@ROPSr4u.com)**

**[www.ROPSr4U.com](http://www.ROPSr4U.com)**



# New York ROPS Retrofit Rebate Program

**"We almost lost a brother,  
our farm, our way of life..."**  
We installed ROPS on all of our tractors to make sure  
it doesn't happen again." —Talnest Brothers, Mohlen New Farm



**2010 Rebate  
70% off**  
Save up to \$765 on costs to  
retrofit your tractor

More than half of rollover injuries require a trip to the hospital and result in 70 lost workdays due to the injury. 1 in 7 farmers involved in tractor overturns are permanently disabled.

Invest in rollover protection now and we'll pick up part of the bill. Call now and receive a rebate of 70% (up to \$765) for the entire cost of retrofitting your tractor. We will help you find the right model and dealer.

*Now, getting rollover protection has never been easier or more affordable.*

**CALL 1-877-ROPS-R4U**

80% OF DEATHS CAUSED BY ROLLOVERS HAPPEN TO EXPERIENCED FARMERS.



Sources: James L. Seward and Catherine M. Young

- **Launched November 2006**
- **No more than \$500 out of Pocket**
- **Toll-free hotline**



# NEC Mini Grants



Bassett Healthcare Network  
New York Center for Agricultural  
Medicine and Health

## **Pilot Project Funding**

**Up to \$15,000 mini grant for one year projects**

- **Lay groundwork for larger, multi year projects**
- **Identify emerging health & safety issues in Farming, Fishing or Forestry**
- **Identify innovative and Effective means for reducing/eliminating workplace hazards**

# NEC Mini Grants



Bassett Healthcare Network  
New York Center for Agricultural  
Medicine and Health

**RFP will be out in April**

## **Eligibility Criteria:**

- **Research or outreach activities conducted in: ME, MA, NH, VT, CT, RI, DE, NY, PA, MD, NJ, or WV**
- **Preference given to proposals that support goals of NEC**
- **Application can be accessed at:**  
**<http://www.necenter.org/activities/feasibility>**

## Confidential assistance to farmers and their families with stress related issues

### Provides:

- One-on-one support
- Grief support
- Assistance with aid applications
- Finds assistive technology for disabled farmers







PERFORMANCE CHART

Model: PC-40LC-6

Operating Capacity: 4000 kg

Rated Output: 12.5 kW

Rated Speed: 1.0 m/min

Rated Torque: 12.5 Nm

Rated Fuel Consumption: 12.5 l/h

Rated Air Flow: 12.5 m³/min

Rated Hydraulic Pressure: 25 MPa

Rated Hydraulic Flow: 12.5 l/min

Rated Boom Lift: 12.5 m

Rated Boom Reach: 12.5 m

Rated Boom Capacity: 12.5 kg

Rated Boom Weight: 12.5 kg

Rated Boom Length: 12.5 m

Rated Boom Width: 12.5 cm

Rated Boom Height: 12.5 cm

Rated Boom Diameter: 12.5 cm

Rated Boom Thickness: 12.5 mm

Rated Boom Material: Steel

Rated Boom Finish: Paint

Rated Boom Color: Red

Rated Boom Markings: Operator's Name, Model, Capacity, etc.

Rated Boom Identification: Serial Number, etc.

Rated Boom Maintenance: Regular Inspection, Lubrication, etc.

Rated Boom Safety: Use Proper Technique, Avoid Overloading, etc.

Rated Boom Warranty: 1 Year, etc.

Rated Boom Notes: See Operator's Manual for Details.

# Outreach to Farm Community



Bassett Healthcare Network  
New York Center for Agricultural  
Medicine and Health

## On-Farm Safety Program

## Farm Emergency Response Program

## Safety presentations and outreach for the farm community



# NYCAMH On-Farm Safety Program



Bassett Healthcare Network  
New York Center for Agricultural  
Medicine and Health

**Funded by a grant from the New York State Department of Labor Hazard Abatement Board *Over 20 years!***

- 1. Safety Surveys**
- 2. Safety Training**

**Any type of agricultural business:**

- Dairy**
- Vegetable**
- Orchard**
- Greenhouse**
- Horse**



# Farm Safety Surveys



Bassett Healthcare Network  
New York Center for Agricultural  
Medicine and Health

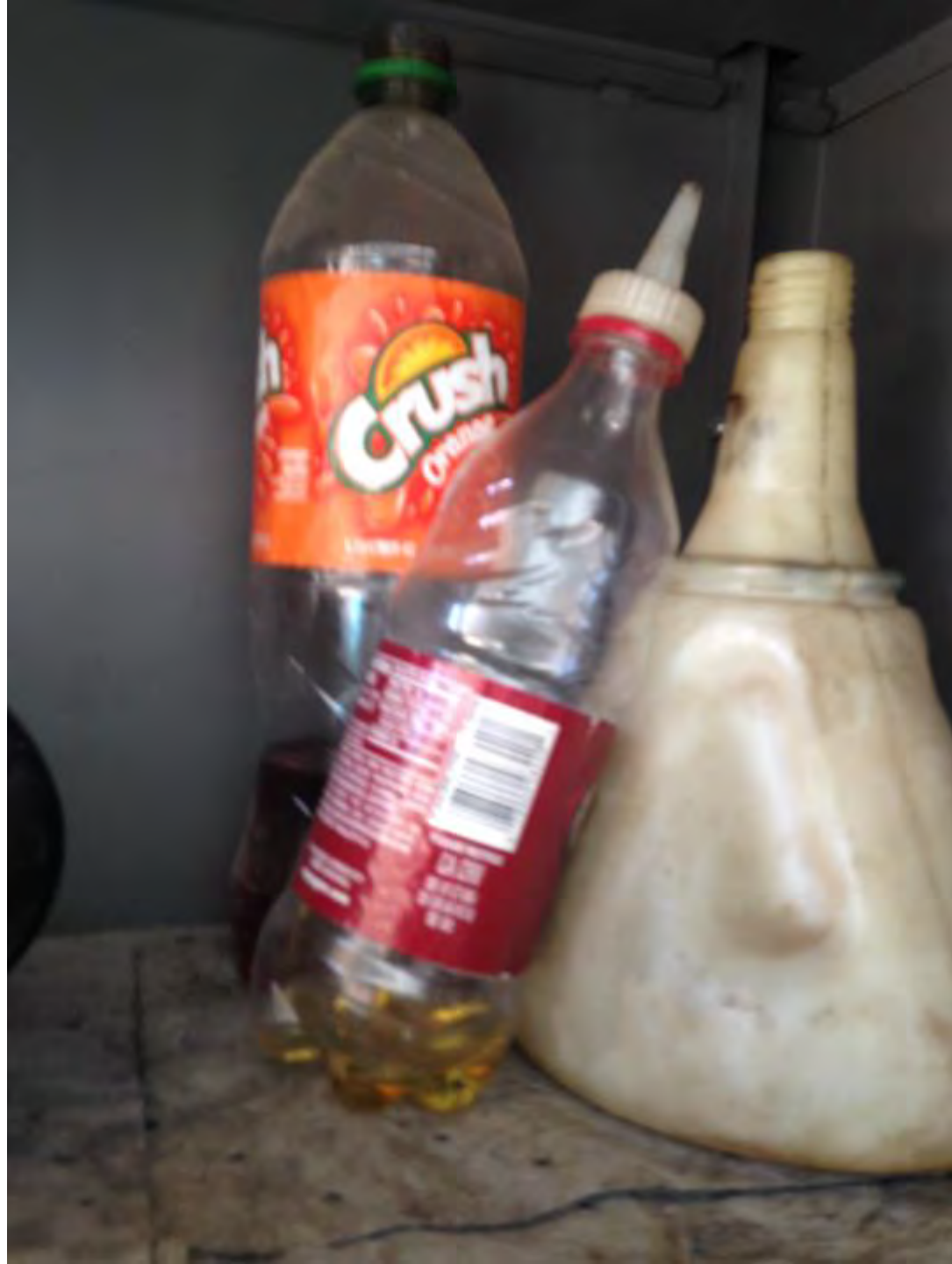
## Safety Audits :

- Identify hazards
- Consultation
- Template written programs for the “OSHA Dairy Dozen”
- Follow-up to see if improvements were made



















# On-Farm Safety Training

- 45 to 60 minutes in length
- Farm specific/Spanish



# NYCAMH Dairy LEP Web Page



Bassett Healthcare Network  
New York Center for Agricultural  
Medicine and Health

www.nycamh.com

The screenshot shows a web browser window with the address bar displaying [www.nycamh.com/osha-ny-dairy-lep/](http://www.nycamh.com/osha-ny-dairy-lep/). The page header features a map of New York State and the Bassett Healthcare Network logo. A navigation bar includes links for HOME, ABOUT US, NEWS, CONTACT US, and social media links for Facebook and YouTube. Below this is a secondary navigation bar with links for NEW YORK, NORTHEAST CENTER, NEC RESEARCH, PROGRAMS, IMPACTS, RESOURCES, and a search bar. The main content area is titled "OSHA NY Dairy LEP" and includes an "OVERVIEW" section. The text states that the New York State dairy industry has learned that the Occupational Health and Safety Administration (OSHA) is implementing a Local Emphasis Program (LEP) that will focus on random, unannounced compliance inspections at New York State dairy farms starting in July 2014. An image of cows in a barn is shown. Below the text, a list of four priorities for OSHA inspections is provided: 1. Imminent danger, 2. Catastrophes and fatal accidents, 3. Complaints and referrals, and 4. Programmed inspections. The page also includes a "USEFUL LINKS" section on the left and a Windows taskbar at the bottom with various application icons and a system clock showing 10:19 AM on 11/24/2014.

Local Emphasis Prog x

www.nycamh.com/osha-ny-dairy-lep/

Bassett Healthcare Network  
New York Center for Agricultural  
Medicine and Health

NEC

HOME ABOUT US NEWS CONTACT US LIKE US ON FACEBOOK VIEW OUR YOUTUBE CHANNEL

NEW YORK NORTHEAST CENTER NEC RESEARCH PROGRAMS IMPACTS RESOURCES SEARCH

OSHA NY Dairy LEP

OVERVIEW

USEFUL LINKS

HOME > OSHA NY DAIRY LEP

Email Print Share Text Size

## OSHA NY Dairy LEP

The New York State dairy industry has learned that, the **Occupational Health and Safety Administration (OSHA)** is implementing a **Local Emphasis Program (LEP)** that will focus on random, unannounced compliance inspections at New York State dairy farms starting in July 2014.

OSHA can inspect certain businesses based on four priorities:

1. Imminent danger
2. Catastrophes and fatal accidents
3. Complaints and referrals
4. Programmed inspections

While farms subject to regulation can be inspected under any one of these OSHA activities, the upcoming focus on New York State dairy farms is

10:19 AM  
11/24/2014



# NYCAMH Farm Emergency Response Program

**Provide training in first response to farm workers**

- How to handle emergencies
- Free CPR and First Aid training



**American Heart Association**





# NYCAMH Farm Emergency Response Program

## FREE Fire Safety Training





# NYCAMH Farm Emergency Response Program

## Ag hazard awareness training for emergency personnel





# Personal Protective Equipment

## Products we sell:

- Hearing protection
- Respiratory
- Chemical protection
- Eye protection
- PTO shields
- SMV emblems





## Retrofit PTO Shields

### **Bare-Co Patent Lever Release Shaft Guard**

*allows guards to be pulled back to facilitate  
**Safe Engagement of PTO Shaft Yokes**  
and regular joint maintenance.*



*An alternate (old) design requiring  
tools to open is available on request.  
The alternate design does NOT meet  
current risk assessment requirements*



## Retrofit PTO Shields



**Prices:**  
**Small Shield \$59**  
**Large Shield \$77**

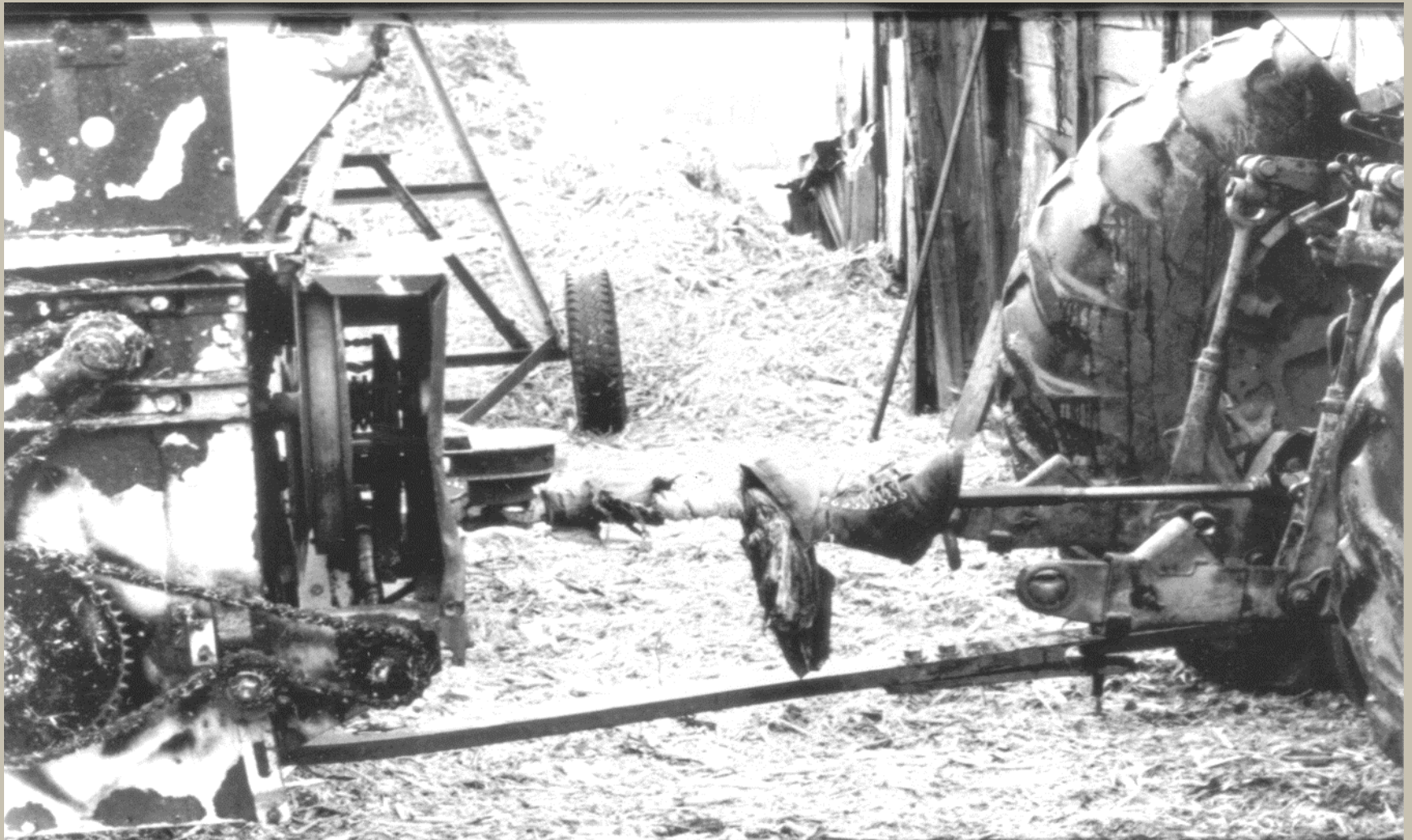


## Bare-Co Lever Release













# Respirator Fit Testing

## On-Farm Respirator Fit Testing for half-face and disposable respirators

### For Fee Service

- Takes seven minutes
- A hood is placed on the head
- One type of spray is used, bitter or sweet, depending on the sensitivity of the person
- Respirator fits if no flavor is detected





# JOHN MAY FARM SAFETY FUND



Bassett Healthcare Network  
New York Center for Agricultural  
Medicine and Health





# ***JOHN MAY FARM SAFETY FUND***



Bassett Healthcare Network  
New York Center for Agricultural  
Medicine and Health

## **Who can apply?**

- **Resident of NY State**
- **Active farmer (Full or Part-time)**
- **Any commodity**
- **Annual gross farm income of \$10,000 - \$349,999, OR dairy farm less than 700 mature cows**



# ***JOHN MAY FARM SAFETY FUND***



Bassett Healthcare Network  
New York Center for Agricultural  
Medicine and Health

## **How does it work?**

- **Simple application**
- **Safety survey from NYCAMH**
- **Pays 50% of the cost up to \$5000**
  - **Cattle handling equipment**
  - **Electrical upgrades**
  - **Eye wash stations**
  - **Silo ladders**



# Mobile Occupational Clinic

**Cholesterol Checks**

**Hearing Testing**

**Vision Testing**

**Blood Pressure Screening**

**Immunizations (cost associated)**

**Skin Cancer Screening (subject to  
provider availability)**

**Respirator fit testing**



# ***Farmers Occupational Health Clinic***



Bassett Healthcare Network  
New York Center for Agricultural  
Medicine and Health

**Farmer's Clinic**

ISN'T  
IT  
TIME

TO BE  
SEEN?

Farmer's Clinic at Bassett

## **Services:**

Respiratory Health  
Hearing  
Ergonomics  
DOT Physicals  
Heavy Metal &  
Lead Exposure  
Asbestos Exposure  
Skin Problems

## **Dr. John May**

Jennifer Fuller, RN



800.343.7527



[jennifer.fuller@bassett.org](mailto:jennifer.fuller@bassett.org)



[www.nycamh.org/programs/  
farmersclinic/](http://www.nycamh.org/programs/farmersclinic/)



Bassett Healthcare Network  
New York Center for Agricultural  
Medicine and Health



# IMPROVED HEALTHCARE



Bassett Healthcare Network  
New York Center for Agricultural  
Medicine and Health

## Online Farmworker Occupational Health Resource

The screenshot displays the 'FARMWORKER CLINICAL CARE RESOURCE For Occupational Health' website. The header includes logos for the National Employment Council (NEC), NYCAMH (New York Center for Agricultural Medicine and Health), and Bassett Healthcare Network. Below the header is a search bar with the text 'Search Our Agricultural Health Care Topics' and a green 'SEARCH' button. A section titled 'HEALTH CARE TOPICS' features five categories, each with a representative image and a title: 'Common Farmworker Health Conditions and Diagnostic Tools', 'Farmworker Patient Education and Prevention Tools', 'Patient Farm Type', 'Information By U.S. Region', and 'Farmworker Demographics and Cultural Resources'. The footer contains logos for NIOSH, MCH, and the CDC, along with copyright information for NYCAMH and funding details from the National Institute of Occupational Safety and Health.

# Other NE Resources



Bassett Healthcare Network  
New York Center for Agricultural  
Medicine and Health

## Northeast Agricultural Safety and Health Coalition-NEASHC



# Other NE Resources



Bassett Healthcare Network  
New York Center for Agricultural  
Medicine and Health

- **Penn State Agricultural Safety and Health Program**  
<https://extension.psu.edu/business-and-operations/farm-safety>
- **University Of Maine Cooperative Extension**  
<https://extension.umaine.edu/agriculture/farm-safety/>
- **Migrant Health Centers**
- **State Departments of Labor Onsite Consultation Services**
- **OSHA Compliance Assistance Specialists**

# National FARMEDIC Training Program



[www.farmedic.com](http://www.farmedic.com)

# **PAgricultural Rescue Training**



**[www.farmemergencies.psu.edu](http://www.farmemergencies.psu.edu)**



# **Thank you!**

**Please contact us for any  
information about our  
services:**

**Phone: (800) 343-7527**

**[www.nycamh.com](http://www.nycamh.com)**