



Assistive Technology for Dairy Farmers



- Wisconsin is ranked 1st in cheese production and 2nd in total milk production in the nation
- Agriculture is an \$88.3 Billion industry with Dairy being the largest segment of that being a \$43.4 Billion industry in Wisconsin
- AgrAbility of WI is made up of a partnership between UW Extension and Easter Seals Farm Assessment and Rehabilitation Methods (FARM) Program
- Of the 3,052 Clients AgrAbility of Wisconsin has served in the last 26 years, 56% are dairy farmers



AgrAbility

Cultivating Accessible Agriculture

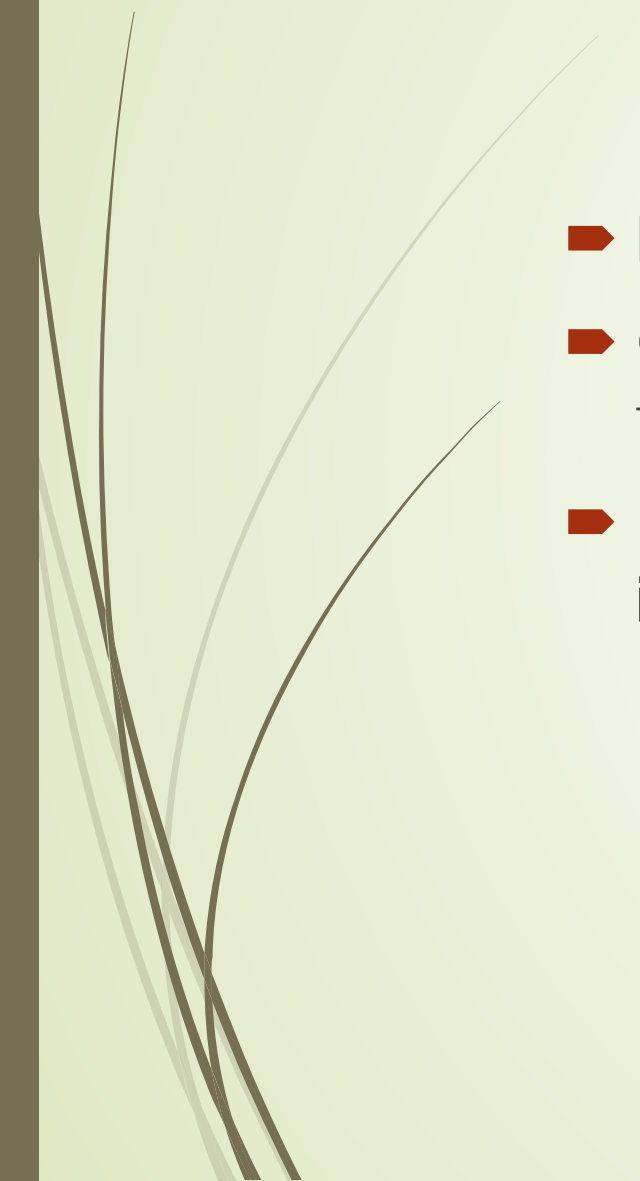
for Pennsylvanians

- Pennsylvania is ranked 6th in total milk production in the nation
- PA has the second largest number of dairy farms in the nation, currently 6,650 dairy farms with 99% being family owned
- AgrAbility PA has worked with 26 dairy farmers in the past two years
- Project Assistant – Abbie Spackman provides the farm evaluations for dairy farmers in PA





Assistive Technology for Dairy Farmers

- 
- Learn about the unique challenges dairy farmers face
 - Gain knowledge of assistive technology that is available for dairy farmers
 - Discuss success stories of assistive technology implemented on dairy farms

Unique Challenges

- Milking schedules
- Specific equipment
- Injuries from repetitive movements
- Generational injuries
- Financial challenges





Assistive Technology



- Automatic Take-off units
- Milking unit track system
- Crowd gates
- Air operated parlor gates
- Gutter grates
- Robotic milking unit
- Milk carts
- Milk Taxi
- Mobility devices
- Alley, Cow & Parlor mats
- One step milk line attachments
- Feed carts
- Types of parlors
- Milker support arm
- Strong Arm Lift

Milking Systems

- Milking Parlors
 - Parallel
 - Herringbone
 - Rotary
 - Step-up/Walk-Through
- Stall Barns
- Robotic systems



Parlors



Robotic Milking Systems



Milk unit track system



Milker Support Arm



Crowd Gate



Alley, Cow, & Parlor Mats



Automatic Take-off units



Milk Cart



Milk Taxi



Gutter Grates



Strong Arm Lift





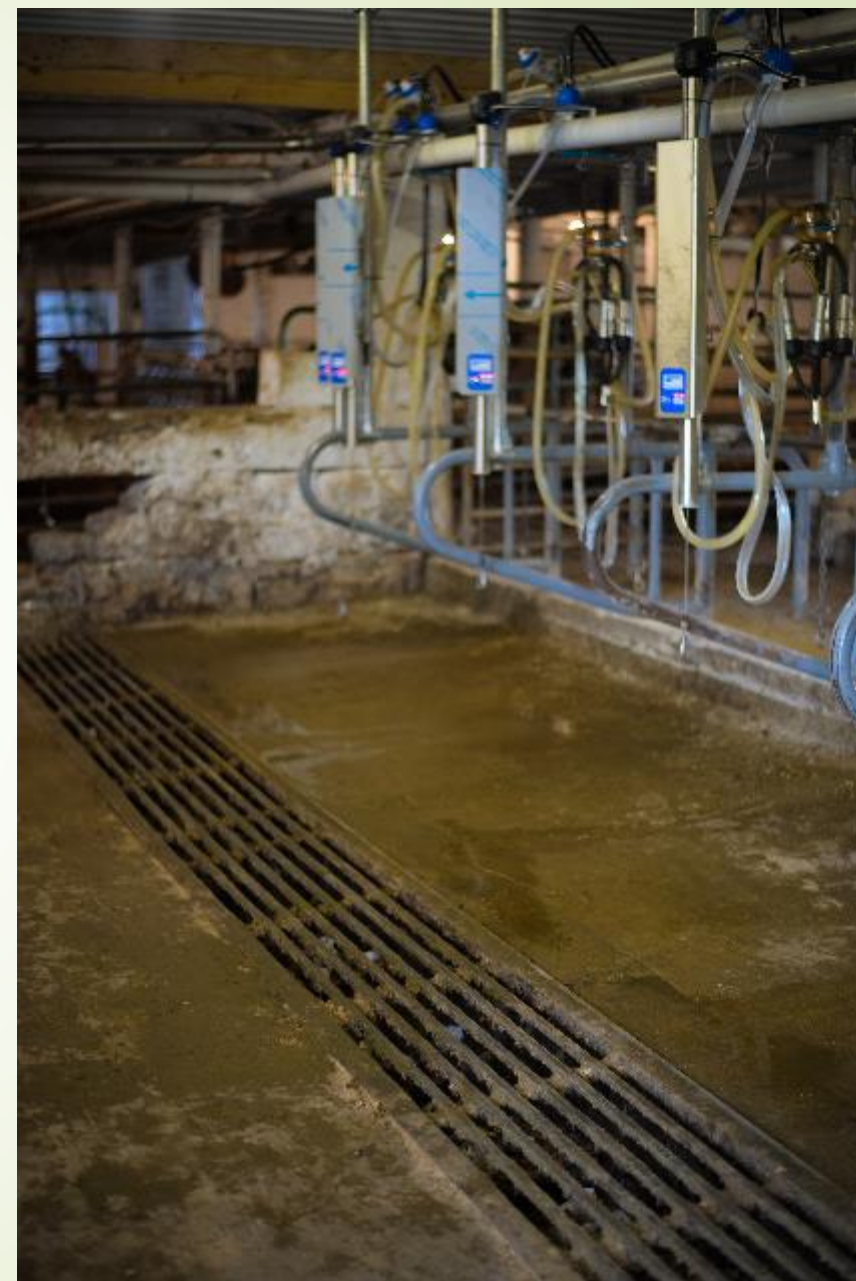
Success Stories

Dairy farmers from Pennsylvania and Wisconsin using assistive technology on their farms!

Philip – 5th generation dairy farmer

- Farm Background
 - 60 milk cows
 - Modified flat parlor
 - Direct to consumer sales
- Respiratory and mobility related medical conditions
- Assistive technology funded by PA Vocational Rehab.
 - Gutter grates
 - Clean in place milking units
 - Automatic detachers





Dairy goat farmer – Todd

- Farm Background
 - Less than 1 acre of land
 - 20 + goats
 - Value added and direct to consumer sales
- Degenerative disk disease and extreme pain levels
- Assistive technology funded by PA Vocational Rehab.
 - Raised milking parlor
 - Feed related modifications
 - Adjustable-height desk for product packaging





Gary – young dairy farmer

- Farm Background
 - Double 8 Pit Parlor
 - 80 milking cows
- Medical Background
 - Traumatic Brain Injury
- Assistive technology
 - Automatic detachers
 - Crowd gate
 - Life Essentials lift



Faustone Holstein Farm

Striving to build a profitable legacy by focusing on the health of the soil and the well being of animals to have a positive effect on the health and well being of the people who consume food as well as the community members who experience the farm's activities.



Photo: Ray Mueller

Adam's Story





Thank you!

Abbie Spackman

AgrAbility for Pennsylvanians

www.AgrAbilityPA.org

aes5450@psu.edu

814-867-5288

Ami Cooper

AgrAbility of Wisconsin

www.agrability.bse.wisc.edu

acooper@eastersealswisconsin.com

608-262-9336