



United States Department of Agriculture

United States Department of Agriculture

Natural Resources Conservation Service

Evan Smith, US Army (Ret.)

District Conservationist

Veteran Emphasis Program Manager

812-279-8117 ext 3

Evan.smith@in.usda.gov



Helping People Help the Land.

USDA is an equal opportunity provider and employer.



United States Department of Agriculture

District Conservationist Lawrence County, IN

Local Federal Contact for the County

Help with Cropland, Pastureland, Forest, and Wildlife Land
uses

Assist Landowners with Conservation
Administer Farm Bill Programs
Complete Conservation Planning

Natural Resources Conservation Service

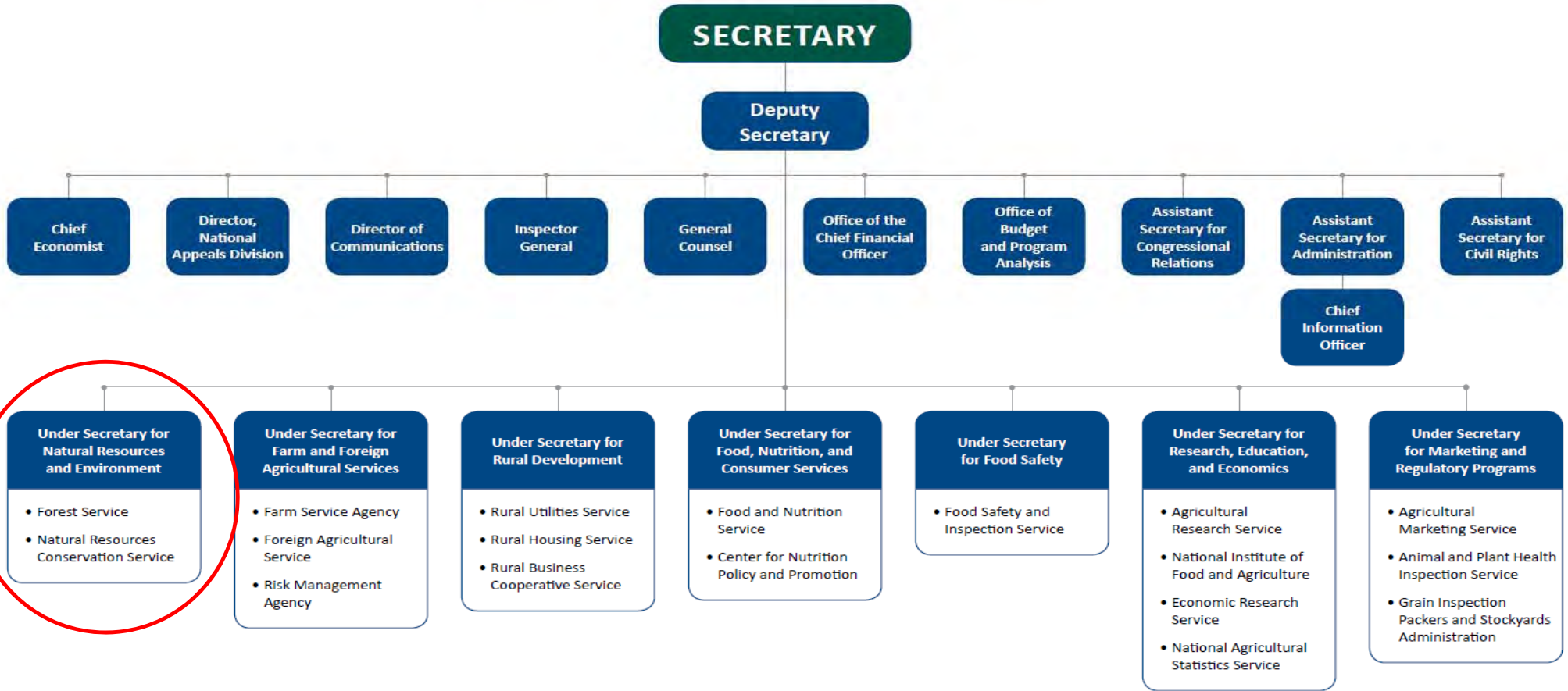
Helping People Help the Land.

USDA is an equal opportunity provider and employer.

Photo: Evan Smith, NRCS



USDA Organization Chart



This organization chart displays the names of USDA offices, agencies, and mission areas. Each office, agency, and mission area is placed within a cell connected by lines to show the structure and hierarchy (Under Secretary, Deputy Secretary, or Secretary) for which they fall under. An HTML version that lists [USDA Agencies and Offices](#) and [USDA Mission Areas](#) is also available on [usda.gov](#).



United States Department of Agriculture

Why The Natural Resources Conservation Service Exists

The Dust Bowl

The Dust Bowl

USDA United States
Department
of Agriculture



The Dust Bowl

USDA United States
Department
of Agriculture



The Dust Bowl

USDA United States
Department
of Agriculture



The Dust Bowl

USDA United States
Department
of Agriculture



The Dust Bowl

USDA United States
Department
of Agriculture



The Dust Bowl

USDA United States
Department
of Agriculture



The Dust Bowl

USDA United States
Department
of Agriculture





United States Department of Agriculture

The Issue Still Remains Today



Phoenix, Arizona

Present Day — Phoenix, Arizona



Present Day — Phoenix, Arizona



Present Day — Phoenix, Arizona





United States Department of Agriculture

It's Not Just the Dust Storms



Water Quality Issues

This runoff could be anywhere in Indiana



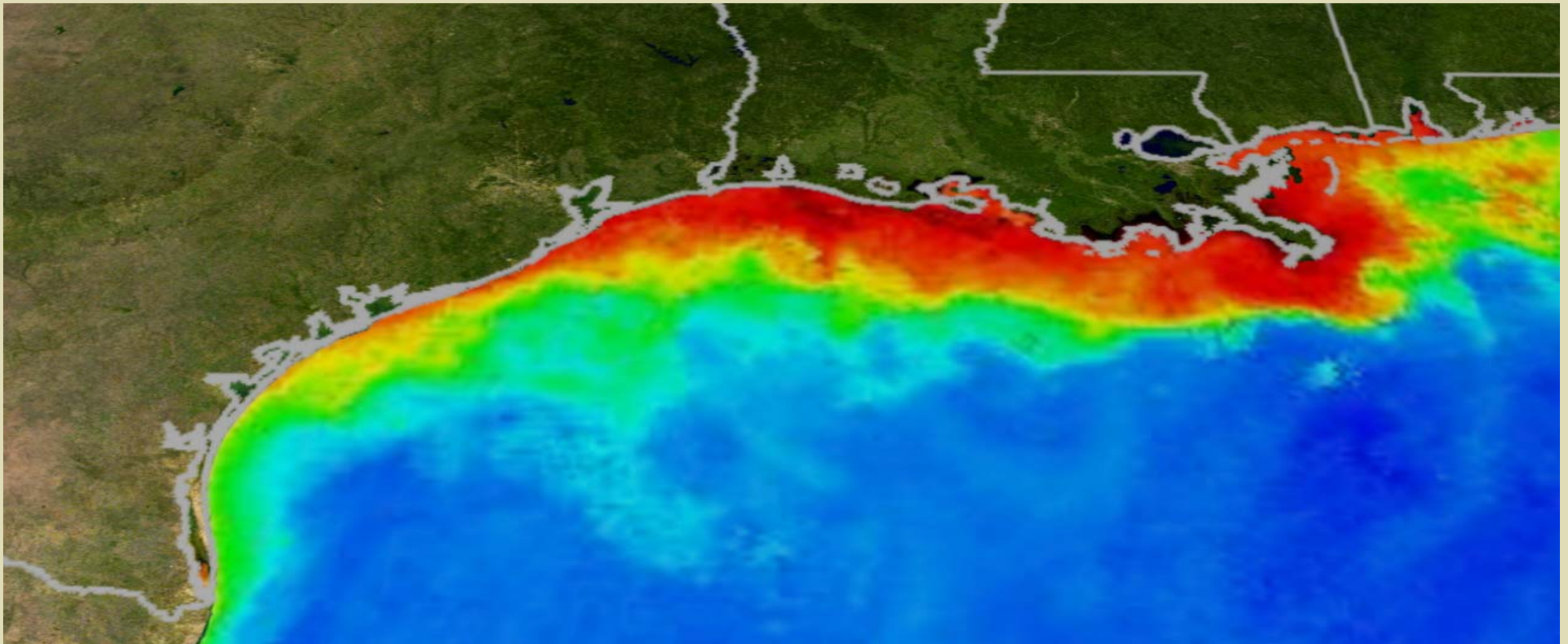
Lake Erie — Present Day Toxic Algal Bloom



Our Nutrient Rich Rivers and Streams Meet the Mississippi River



And flow into the Gulf of Mexico



Causing Catastrophic Damage.





United States Department of Agriculture

How Can NRCS Help?

**Conservation Technical
Assistance**

**Farm Bill Conservation
Programs for Financial
Assistance**

Photo: Evan Smith, NRCS



Helping People Help the Land.
USDA is an equal opportunity provider and employer.



United States Department of Agriculture

NRCS Programs and Cost Share





United States Department of Agriculture

Conservation Reserve Program (CRP)

- Administered by FSA with technical assistance from NRCS and state forestry agencies
- Acreage cap of 24 million acres in 2017
- Adds working grasslands option up to 2 million acres
- One-time early out option in 2015
- Provides more flexibility for cover management
- Maintains the opportunity for retiring farmers to transition CRP land to beginning or military veteran farmers



Overview

The Environ
Incentives P
provides fin
assistance t
producers i
natural reso
deliver envi
such as imp
air quality, c
and surface
erosion and
improved o
habitat.

USDA's Natural Resources Conservation Service offers voluntary Farm Bill conservation programs that benefit both agricultural producers and the environment.

USDA is an equal opportunity provider and employer.

Historically Underserved

Designation	Documentation Needed
Beginning Farmer or Rancher	If the participant can provide one IRS Form 1040 from the last 10 years that shows that the participant did not file schedule F , the participant is eligible as a beginning farmer or rancher. Exception: Participants with nonindustrial private forestland must provide evidence satisfactory to the STC to verify that the participant has not had definitive decision making authority over the land for 10 consecutive years.
Veteran Farmer or Rancher	If the individual can provide one IRS Form 1040 from the last 10 years that shows that the participant did not file Schedule F and can provide a DD Form 214 (Report of Separation) documenting discharge or release under conditions other than dishonorable, the individual has documented criteria to be considered eligible as a veteran farmer or rancher. For a legal entity or joint operation to be considered a VFR entity, all members must meet the definition of VFR. Exception: Participants with nonindustrial private forestland must provide evidence satisfactory to the STC



Erosion

Compaction

Organic Matter Depletion

Surface and Ground Water

Excessive Plant Pest Pressure

Wildlife Habitat Degradation

Nutrient, Sediment, Bio-Solid Runoff

Do You See Any Resource Concerns?

Radish

Turnip

Cereal Rye

Clover



Degenerative vs Regenerative Agriculture

Natural Resources Conservation Service

<i>Soil</i>	<i>USDA Tolerable Soil Loss =2T</i>
CtxD2 Crider-Frederick silt loams, karst, 6 to 20 percent slopes, eroded	[5.0 (2T = 10)] 10 Tons Per Year is "Tolerable"
<i>Farming Rotation</i>	<i>Soil Loss-Tons/Acre/Year</i>
15 % Slope	T=10 Tons/AC/YR
No Till Corn - No Till Beans - Wheat Cover Crop	1.6
Turbo Till Corn, Turbo Till Beans	40
Turbo Till Corn-Wheat CC, Turbo Till Beans-Wheat CC	21
20% Slope	T= 10 Tons/AC/YR
No Till Corn - No Till Beans - Wheat Cover Crop	2.3
Turbo Till Corn, Turbo Till Beans	58
Turbo Till Corn-Wheat CC, Turbo Till Beans-Wheat CC	32

Cover Crop Benefits and Mixes

Cover Crop Benefits

- Reduce Soil Erosion
- Build Soil Tilth & Improve Soil Health
- Increase Soil Porosity & Infiltration
- Reduce Pests
- Improve Soil Microbiology
- Produce/ Scavenge Crop Nutrients
- Reduce Soil Compaction
- Increase Nutrient Recycling
- Good Forage Source
- Help Winter Annual Weed Control
- Improve Yield Potential Over Time

Which Cover Crop is Right for You?

Nutrient Scavengers?

- Annual Ryegrass
- Radish
- Winter Cereal Rye
- Oats

Nitrogen Producers?

- Crimson Clover
- Hairy Vetch
- Austrian Winter Pea

Nitrogen Producers & Scavengers?

- Crimson Clover/Radish
- Hairy Vetch/Annual Rye Grass
- Crimson Clover/Radish
- Austrian Winter Pea/Radish

Helping People Help the Land.

USDA is an equal opportunity provider and employer.



Tillage Radish



Tillage Radish



Inadequate Feed and Forage

Excessive Nutrients , Bio-solids from Runoff

Organic Matter Depletion

Inadequate Structure and Composition

Erosion

Undesirable Plant Productivity & Health

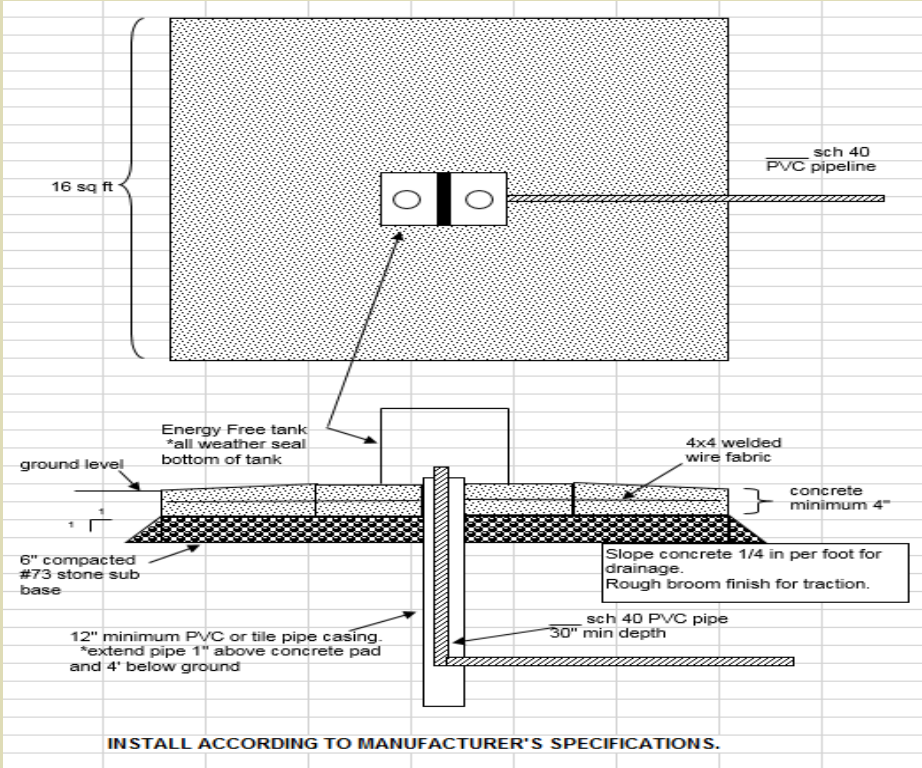
Livestock Interior Rotational Grazing Fence



Sink Hole and Pond Exclusion Fence



Livestock Watering Facility with HUAP



Access Road & Heavy Use Area Protection



Helping People Help the Land.

USDA is an equal opportunity provider and employer.

Grassed Waterways



Grassed Waterways



Grassed Waterways



Grassed Waterway and Structure



Water Quality Structures

Before



During



After



Northeast Indiana

Gully Repair



Two Stage Ditch

Before



During



After



Clinton County, Indiana

Wetland Development



Wetland Development



Heavy Use Area Protection



Disaster Relief



Roofed Dry Stacks



Animal Waste Storage Pond



Stream Crossing with Water Access



Creating Pollinator Habitat

Monarch Specialty Habitat



General Pollinator Habitat





United States Department of Agriculture

Monarch Butterfly Habitat

Department of Agriculture

Common Milkweed
Asclepias syriaca

Swamp Milkweed
Asclepias incarnata

Butterfly Milkweed
Asclepias tuberosa

Purple Milkweed
Asclepias purpurascens

Monarch butterflies are some of the most recognizable wildlife in North America. They undertake remarkable migrations over multiple generations across thousands of miles, beginning in Mexico, across the United States, and into Canada. Indiana is part of their journey.

Monarchs are beautiful insects with four vibrantly colored wings. Males have dark spots on each hindwing and their wing veins are thinner than those of females. Monarchs are important pollinators for our crops and flowers.

Monarch Butterfly

- NRCS recently launched a special effort to improve habitat for monarch butterflies in 10 Midwest and Southern Plains states to address diminishing populations of this important species due to the decline of native plants like milkweed.
- This targeted effort will invest \$4 million in 2016 to help combat the decline of this important pollinator.
- We will focus on conservation practices that provide buffer habitat along waterways and in wetlands, cover crops and pasture management and that increase soil health, control invasive species and provide other beneficial wildlife habitat.

Ind

lap





United States Department of Agriculture

Who Can & How To Apply

Natural Resources Conservation Service

- Property owners or tenants need to set up their eligibility with FSA
- Farm & Tract Number
 - Deed or Lease
- Comply with Highly Erodible Land/Wetland Conservation
- Complete your Adjusted Gross Income form
- Develop your conservation plan with your District Conservationist or SWCD Technician



Helping People Help the Land.

USDA is an equal opportunity provider and employer.



United States Department of Agriculture

Any Questions?

Thank you for your conservation efforts!

Evan Smith, US Army (Ret.)
District Conservationist
Veteran Emphasis Program Manager
812-279-8117 ext 3
Evan.smith@in.usda.gov



Helping People Help the Land.
USDA is an equal opportunity provider and employer.